



## CONSOLIDATED TEST RESULTS SUMMARY

Please see the following pages for full test results.

<b>DRYCP50</b>	<b>CG41</b>	<b>NR: Not Reported</b> <b>NA: Not Available</b>
<b>50MG DRY CAPSULES</b>	<b>0.38 G</b>	<b>LOQ: Limit Of Quantitation</b> <b>LOD: Limit Of Detection</b>
<b>LABORATORY: COLUMBIA LABORATORIES</b>	<b>OREGON ACCREDITATION: OR100028</b>	<b>1 g = 10<sup>-3</sup> kg = 10<sup>3</sup> mg = 10<sup>6</sup> µg</b> <b>1 mg/kg = 1 ppm = 1000 ppb</b>

POTENCY	PER SERVING	PER GRAM	REGULATORY ACTION LEVEL
Cannabidiol (CBD)	55 mg/serving	145 mg/g	N/A
Total THC (d9-THC + d8-THC)	0.79 mg/serving	2.09 mg/g	3 mg/g
Cannabigerol (CBG)	0.39 mg/serving	1.03 mg/g	N/A
Cannabinol (CBN)	<LOQ mg/serving	<LOQ mg/g	N/A
Cannabichromene (CBC)	1.01 mg/serving	2.67 mg/g	N/A

HEAVY METALS	PER SERVING	PER GRAM	REGULATORY ACTION LEVEL
Arsenic	<LOQ µg/serving	<LOQ µg/g	10 µg/day <sup>[1]</sup>
Cadmium	<LOQ µg/serving	<LOQ µg/g	4.1 µg/day <sup>[1]</sup>
Lead	<0.02 µg/serving	<0.0526 µg/g	3.5 µg/day <sup>[2]</sup>
Mercury	<LOQ µg/serving	<LOQ µg/g	2 µg/day <sup>[1]</sup>

PESTICIDES	REGULATORY ACTION LEVEL
None of the 59 pesticides tested found above limit of quantitation in the sample.	10 ppb <sup>[1]</sup>

RESIDUAL SOLVENTS
None of the 36 residual solvents tested found above limit of quantitation in the sample.

MICROBIAL	PASS/FAIL
Yeast & Mold	Pass
Coliform	Pass
Water Activity	Pass

TERPENES	% OF SAMPLE
(R)-(+)-Limonene	0.346%
β-Myrcene	0.295%
α-Bisabolol	0.0325%

TERPENES	% OF SAMPLE
β-Caryophyllene	0.336%
Humulene	0.0538%
(-)-Caryophyllene Oxide	0.0365%

1. American Herbal Pharmacopoeia. (2014). *Cannabis Inflorescence: Standards of Identity, Analysis, and Quality Control*. Washington DC: AHP.  
 2. US Food and Drug Administration. (2019). *Lead in Food, Foodwares, and Dietary Supplements*. Washington DC: FDA. US Food and Drug Administration. (2019). *Lead in Food, Foodwares, and Dietary Supplements*. Washington DC: FDA.



12423 NE Whitaker Way  
 Portland, OR 97230  
 503-254-1794



**Report Number:** 20-007324/D02.R01  
**Report Date:** 07/20/2020  
**ORELAP#:** OR100028  
**Purchase Order:**  
**Received:** 07/14/20 16:40

This is an amended version of report# 20-007324/D02.R00.  
 Reason: Updated Product Identity.

**Customer:** Etz Hayim Holdings  
**Product identity:** CG41-DRYCP50  
**Client/Metric ID:** FORM-0714-CG40  
**Laboratory ID:** 20-007324-0001

### Summary

**Potency:**

Analyte per 1g	Result	Limits	Units	Status	
CBC per 1g	2.67		mg/1g		CBD-Total per 1g 145 mg/1g
CBD per 1g	145		mg/1g		
CBDV per 1g	0.543		mg/1g		THC-Total per 1g 2.09 mg/1g
CBG per 1g	1.03		mg/1g		(Reported in milligrams per serving)
Δ9-THC per 1g	2.09		mg/1g		



12423 NE Whitaker Way  
 Portland, OR 97230  
 503-254-1794

**Report Number:** 20-007324/D02.R01  
**Report Date:** 07/20/2020  
**ORELAP#:** OR100028  
**Purchase Order:**  
**Received:** 07/14/20 16:40



**Customer:** Etz Hayim Holdings

**Product identity:** CG41-DRYCP50  
**Client/Metric ID:** FORM-0714-CG40  
**Sample Date:**  
**Laboratory ID:** 20-007324-0001  
**Relinquished by:** Client \*See COC\*  
**Temp:** 22.6 °C

### Sample Results

Potency per 1g	Method J AOAC 2015 V98-6 (mod)	Batch: 2005829	Analyze: 7/15/20 7:10:00 PM		
Analyte	Result	Limits	Units	LOQ	Notes
CBC per 1g	2.67		mg/1g	0.0317	
CBC-A per 1g	< LOQ		mg/1g	0.0317	
CBC-Total per 1g	2.67		mg/1g	0.0595	
CBD per 1g	145		mg/1g	3.17	
CBD-A per 1g	< LOQ		mg/1g	0.0317	
CBD-Total per 1g	145		mg/1g	3.20	
CBDV per 1g	0.543		mg/1g	0.0317	
CBDV-A per 1g	< LOQ		mg/1g	0.0317	
CBDV-Total per 1g	0.543		mg/1g	0.0592	
CBG per 1g	1.03		mg/1g	0.0317	
CBG-A per 1g	< LOQ		mg/1g	0.0317	
CBG-Total per 1g	1.03		mg/1g	0.0592	
CBL per 1g	< LOQ		mg/1g	0.0317	
CBN per 1g	< LOQ		mg/1g	0.0317	
Δ8-THC per 1g	< LOQ		mg/1g	0.0317	
Δ9-THC per 1g	2.09		mg/1g	0.0317	
THC-A per 1g	< LOQ		mg/1g	0.0317	
THC-Total per 1g	2.09		mg/1g	0.0595	
THCV per 1g	< LOQ		mg/1g	0.0317	
THCV-A per 1g	< LOQ		mg/1g	0.0317	
THCV-Total per 1g	< LOQ		mg/1g	0.0596	
<b>Total Cannabinoids 1g<sup>†</sup></b>	<b>151</b>		<b>mg/1g</b>		

Test results relate only to the parameters tested and to the samples as received by the laboratory. Test results meet all requirements of NELAP and the Columbia Laboratories quality assurance plan unless otherwise noted. This report shall not be reproduced, except in full, without the written consent of this laboratory. Samples will be retained for a maximum of 30 days from the receipt date unless prior arrangements have been made.



12423 NE Whitaker Way  
Portland, OR 97230  
503-254-1794



**Report Number:** 20-007324/D05.R00  
**Report Date:** 07/23/2020  
**ORELAP#:** OR100028  
**Purchase Order:**  
**Received:** 07/14/20 16:40

**Customer:** Etz Hayim Holdings  
**Product identity:** CG41-DRYCP50  
**Client/Metric ID:** FORM-0714-CG40  
**Laboratory ID:** 20-007324-0002

## Summary

### Residual Solvents:

All analytes passing and less than LOQ.

### Pesticides:

All analytes passing and less than LOQ.

### Terpenes:

Analyte	Percent by weight	Percent of Total	Analyte	Percent by weight	Percent of Total
(R)-(+)-Limonene <sup>†</sup>	0.346	31.45%	β-Caryophyllene <sup>†</sup>	0.336	30.55%
β-Myrcene <sup>†</sup>	0.295	26.82%	Humulene <sup>†</sup>	0.0538	4.89%
(-)-caryophyllene oxide <sup>†</sup>	0.0365	3.32%	α-Bisabolol <sup>†</sup>	0.0325	2.95%
<b>Total Terpenes<sup>†</sup></b>	<b>1.10</b>	<b>100.00%</b>			

### Metals:

Analyte	Result	Limits
Lead	0.0526	



12423 NE Whitaker Way  
 Portland, OR 97230  
 503-254-1794



**Report Number:** 20-007324/D05.R00  
**Report Date:** 07/23/2020  
**ORELAP#:** OR100028  
**Purchase Order:**  
**Received:** 07/14/20 16:40

**Customer:** Etz Hayim Holdings

**Product identity:** CG41-DRYCP50  
**Client/Metric ID:** FORM-0714-CG40  
**Sample Date:**  
**Laboratory ID:** 20-007324-0002  
**Relinquished by:** Client \*See COC\*  
**Temp:** 22.6 °C

### Sample Results

Solvents		Method EPA5021A				Units µg/g	Batch 2005908	Analyze 07/20/20 07:19 AM			
Analyte	Result	Limits	LOQ	Status	Notes	Analyte	Result	Limits	LOQ	Status	Notes
1,4-Dioxane	< LOQ	380	100	pass		2-Butanol	< LOQ	5000	200	pass	
2-Ethoxyethanol	< LOQ	160	30.0	pass		2-Methylbutane	< LOQ		200		
2-Methylpentane	< LOQ		30.0			2-Propanol (IPA)	< LOQ	5000	200	pass	
2,2-Dimethylbutane	< LOQ		30.0			2,2-Dimethylpropane	< LOQ		200		
2,3-Dimethylbutane	< LOQ		30.0			3-Methylpentane	< LOQ		30.0		
Acetone	< LOQ	5000	200	pass		Acetonitrile	< LOQ	410	100	pass	
Benzene	< LOQ	2.00	1.00	pass		Butanes (sum)	< LOQ	5000	400	pass	
Cyclohexane	< LOQ	3880	200	pass		Ethanol <sup>l</sup>	< LOQ		200		
Ethyl acetate	< LOQ	5000	200	pass		Ethyl benzene	< LOQ		200		
Ethyl ether	< LOQ	5000	200	pass		Ethylene glycol	< LOQ	620	200	pass	
Ethylene oxide	< LOQ	50.0	30.0	pass		Hexanes (sum)	< LOQ	290	150	pass	
Isopropyl acetate	< LOQ	5000	200	pass		Isopropylbenzene	< LOQ	70.0	30.0	pass	
m,p-Xylene	< LOQ		200			Methanol	< LOQ	3000	200	pass	
Methylene chloride	< LOQ	600	200	pass		Methylpropane	< LOQ		200		
n-Butane	< LOQ		200			n-Heptane	< LOQ	5000	200	pass	
n-Hexane	< LOQ		30.0			n-Pentane	< LOQ		200		
o-Xylene	< LOQ		200			Pentanes (sum)	< LOQ	5000	600	pass	
Propane	< LOQ	5000	200	pass		Tetrahydrofuran	< LOQ	720	100	pass	
Toluene	< LOQ	890	100	pass		Total Xylenes	< LOQ		400		
Total Xylenes and Ethyl	< LOQ	2170	600	pass							

Test results relate only to the parameters tested and to the samples as received by the laboratory. Test results meet all requirements of NELAP and the Columbia Laboratories quality assurance plan unless otherwise noted. This report shall not be reproduced, except in full, without the written consent of this laboratory. Samples will be retained for a maximum of 30 days from the receipt date unless prior arrangements have been made.



12423 NE Whitaker Way  
 Portland, OR 97230  
 503-254-1794



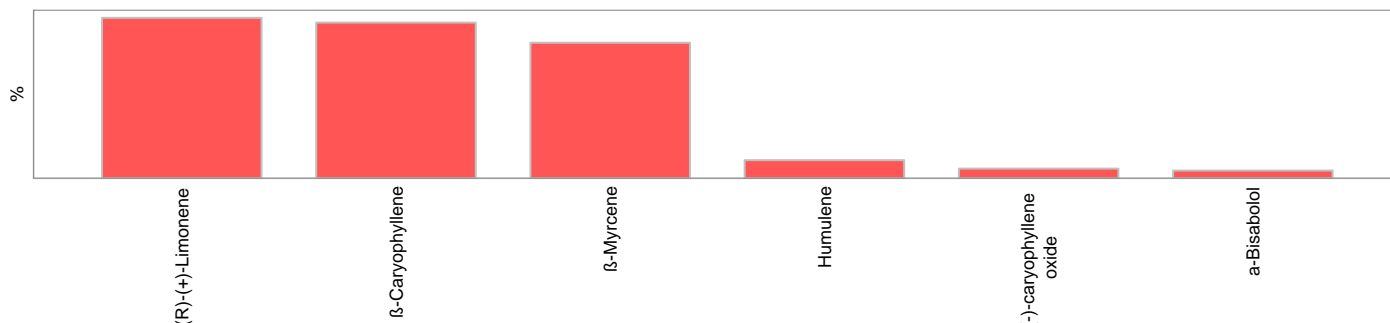
**Report Number:** 20-007324/D05.R00  
**Report Date:** 07/23/2020  
**ORELAP#:** OR100028  
**Purchase Order:**  
**Received:** 07/14/20 16:40

Pesticides											
Method AOAC 2007.01 & EN 15662 (mod) Units mg/kg Batch 2005985 Analyze 07/21/20 02:23 PM											
Analyte	Result	Limits	LOQ	Status	Notes	Analyte	Result	Limits	LOQ	Status	Notes
Abamectin	< LOQ	0.50	0.250	pass		Acephate	< LOQ	0.40	0.250	pass	
Acequinocyl	< LOQ	2.0	1.00	pass		Acetamiprid	< LOQ	0.20	0.100	pass	
Aldicarb	< LOQ	0.40	0.200	pass		Azoxystrobin	< LOQ	0.20	0.100	pass	
Bifenazate	< LOQ	0.20	0.100	pass		Bifenthrin	< LOQ	0.20	0.100	pass	
Boscalid	< LOQ	0.40	0.200	pass		Carbaryl	< LOQ	0.20	0.100	pass	
Carbofuran	< LOQ	0.20	0.100	pass		Chlorantraniliprole	< LOQ	0.20	0.100	pass	
Chlorfenapyr	< LOQ	1.0	0.500	pass		Chlorpyrifos	< LOQ	0.20	0.100	pass	
Clofentezine	< LOQ	0.20	0.100	pass		Cyfluthrin	< LOQ	1.0	0.500	pass	
Cypermethrin	< LOQ	1.0	0.500	pass		Daminozide	< LOQ	1.0	0.500	pass	
Diazinon	< LOQ	0.20	0.100	pass		Dichlorvos	< LOQ	1.0	0.500	pass	
Dimethoate	< LOQ	0.20	0.100	pass		Ethoprophos	< LOQ	0.20	0.100	pass	
Etofenprox	< LOQ	0.40	0.200	pass		Etoxazole	< LOQ	0.20	0.100	pass	
Fenoxycarb	< LOQ	0.20	0.100	pass		Fenpyroximate	< LOQ	0.40	0.200	pass	
Fipronil	< LOQ	0.40	0.200	pass		Fonicamid	< LOQ	1.0	0.400	pass	
Fludioxonil	< LOQ	0.40	0.200	pass		Hexythiazox	< LOQ	1.0	0.400	pass	
Imazalil	< LOQ	0.20	0.100	pass		Imidacloprid	< LOQ	0.40	0.200	pass	
Kresoxim-methyl	< LOQ	0.40	0.200	pass		Malathion	< LOQ	0.20	0.100	pass	
Metalaxyl	< LOQ	0.20	0.100	pass		Methiocarb	< LOQ	0.20	0.100	pass	
Methomyl	< LOQ	0.40	0.200	pass		MGK-264	< LOQ	0.20	0.100	pass	
Myclobutanil	< LOQ	0.20	0.100	pass		Naled	< LOQ	0.50	0.250	pass	
Oxamyl	< LOQ	1.0	0.500	pass		Paclobutrazole	< LOQ	0.40	0.200	pass	
Parathion-Methyl	< LOQ	0.20	0.200	pass		Permethrin	< LOQ	0.20	0.100	pass	
Phosmet	< LOQ	0.20	0.100	pass		Piperonyl butoxide	< LOQ	2.0	1.00	pass	
Prallethrin	< LOQ	0.20	0.200	pass		Propiconazole	< LOQ	0.40	0.200	pass	
Propoxur	< LOQ	0.20	0.100	pass		Pyrethrin I (total)	< LOQ	1.0	0.500	pass	
Pyridaben	< LOQ	0.20	0.100	pass		Spinosad	< LOQ	0.20	0.100	pass	
Spiromesifen	< LOQ	0.20	0.100	pass		Spirotetramat	< LOQ	0.20	0.100	pass	
Spiroxamine	< LOQ	0.40	0.200	pass		Tebuconazole	< LOQ	0.40	0.200	pass	
Thiacloprid	< LOQ	0.20	0.100	pass		Thiamethoxam	< LOQ	0.20	0.100	pass	
Trifloxystrobin	< LOQ	0.20	0.100	pass							

Test results relate only to the parameters tested and to the samples as received by the laboratory. Test results meet all requirements of NELAP and the Columbia Laboratories quality assurance plan unless otherwise noted. This report shall not be reproduced, except in full, without the written consent of this laboratory. Samples will be retained for a maximum of 30 days from the receipt date unless prior arrangements have been made.



Terpenes				Method J AOAC 2015 V98-6	Units %	Batch 2005874	Analyze 07/17/20 10:43 AM		
Analyte	Result	LOQ	% of Total	Notes	Analyte	Result	LOQ	% of Total	Notes
(R)-(+)-Limonene <sup>†</sup>	0.346	0.020	31.45%		β-Caryophyllene <sup>†</sup>	0.336	0.020	30.55%	
β-Myrcene <sup>†</sup>	0.295	0.020	26.82%		Humulene <sup>†</sup>	0.0538	0.020	4.89%	
(-)-caryophyllene oxide <sup>†</sup>	0.0365	0.020	3.32%		α-Bisabolol <sup>†</sup>	0.0325	0.020	2.95%	
(-)-α-Terpineol <sup>†</sup>	< LOQ	0.020	0.00%		(-)-Guaiol <sup>†</sup>	< LOQ	0.020	0.00%	
(-)-Isopulegol <sup>†</sup>	< LOQ	0.020	0.00%		(-)-β-Pinene <sup>†</sup>	< LOQ	0.020	0.00%	
(+)-Borneol <sup>†</sup>	< LOQ	0.020	0.00%		(+)-Cedrol <sup>†</sup>	< LOQ	0.020	0.00%	
(+)-fenchol <sup>†</sup>	< LOQ	0.020	0.00%		(+)-Pulegone <sup>†</sup>	< LOQ	0.020	0.00%	
(±)-Camphor <sup>†</sup>	< LOQ	0.020	0.00%		(±)-cis-Nerolidol <sup>†</sup>	< LOQ	0.020	0.00%	
(±)-fenchone <sup>†</sup>	< LOQ	0.020	0.00%		(±)-trans-Nerolidol <sup>†</sup>	< LOQ	0.020	0.00%	
α-cedrene <sup>†</sup>	< LOQ	0.020	0.00%		α-phellandrene <sup>†</sup>	< LOQ	0.020	0.00%	
α-pinene <sup>†</sup>	< LOQ	0.020	0.00%		α-Terpinene <sup>†</sup>	< LOQ	0.020	0.00%	
Camphene <sup>†</sup>	< LOQ	0.020	0.00%		cis-β-Ocimene <sup>†</sup>	< LOQ	0.006	0.00%	
d-3-Carene <sup>†</sup>	< LOQ	0.020	0.00%		Eucalyptol <sup>†</sup>	< LOQ	0.020	0.00%	
farnesene <sup>†</sup>	< LOQ	0.020	0.00%		γ-Terpinene <sup>†</sup>	< LOQ	0.020	0.00%	
Geraniol <sup>†</sup>	< LOQ	0.020	0.00%		Geranyl acetate <sup>†</sup>	< LOQ	0.020	0.00%	
Isoborneol <sup>†</sup>	< LOQ	0.020	0.00%		Linalool <sup>†</sup>	< LOQ	0.020	0.00%	
Menthol <sup>†</sup>	< LOQ	0.020	0.00%		nerol <sup>†</sup>	< LOQ	0.020	0.00%	
p-Cymene <sup>†</sup>	< LOQ	0.020	0.00%		Sabinene <sup>†</sup>	< LOQ	0.020	0.00%	
Sabinene hydrate <sup>†</sup>	< LOQ	0.020	0.00%		Terpinolene <sup>†</sup>	< LOQ	0.020	0.00%	
trans-β-Ocimene <sup>†</sup>	< LOQ	0.013	0.00%		valencene <sup>†</sup>	< LOQ	0.020	0.00%	
<b>Total Terpenes</b>	<b>1.10</b>								



Metals									
Analyte	Result	Limits	Units	LOQ	Batch	Analyze	Method	Notes	
Arsenic	< LOQ		mg/kg	0.0400	2005962	07/20/20	AOAC 2013.06 (mod.)	X	
Cadmium	< LOQ		mg/kg	0.0400	2005962	07/20/20	AOAC 2013.06 (mod.)	X	
Lead	0.0526		mg/kg	0.0400	2005962	07/20/20	AOAC 2013.06 (mod.)	X	
Mercury	< LOQ		mg/kg	0.0200	2005962	07/20/20	AOAC 2013.06 (mod.)	X	

Nutrition									
Analyte	Result	Limits	Units	LOQ	Batch	Analyze	Method	Notes	
Water Activity	0.303	0.650	Aw	0.030	2005904	07/18/20	AOAC 978.18	X	



12423 NE Whitaker Way  
Portland, OR 97230  
503-254-1794



**Report Number:** 20-007324/D03.R00  
**Report Date:** 07/21/2020  
**ORELAP#:** OR100028  
**Purchase Order:**  
**Received:** 07/14/20 16:40

**Customer:** Etz Hayim Holdings  
**Product identity:** CG41-DRYCP50  
**Client/Metric ID:** FORM-0714-CG40  
**Laboratory ID:** 20-007324-0003

## Summary

### Microbiology:

*Less than LOQ for all analytes.*





12423 NE Whitaker Way  
 Portland, OR 97230  
 503-254-1794



**Report Number:** 20-007324/D03.R00  
**Report Date:** 07/21/2020  
**ORELAP#:** OR100028  
**Purchase Order:**  
**Received:** 07/14/20 16:40

**Customer:** Etz Hayim Holdings

**Product identity:** CG41-DRYCP50  
**Client/Metric ID:** FORM-0714-CG40  
**Sample Date:**  
**Laboratory ID:** 20-007324-0003  
**Relinquished by:** Client \*See COC\*  
**Temp:** 22.6 °C

### Sample Results

#### Microbiology

Analyte	Result	Limits	Units	LOQ	Batch	Analyze	Method	Notes
E.coli	< LOQ		cfu/g	10	2005862	07/19/20	AOAC 991.14 (Petrifilm)	X
Total Coliforms	< LOQ		cfu/g	10	2005862	07/19/20	AOAC 991.14 (Petrifilm)	X
Mold (RAPID Petrifilm)	< LOQ		cfu/g	10	2005864	07/19/20	AOAC 2014.05 (RAPID)	X
Yeast (RAPID Petrifilm)	< LOQ		cfu/g	10	2005864	07/19/20	AOAC 2014.05 (RAPID)	X