

CONSOLIDATED TEST RESULTS SUMMARY

Please see the following pages for full test results.

BULK SKU	BATCH #	NR: Not Reported NA: Not Available LOQ: Limit Of Quantitation LOD: Limit Of Detection 1 g = 10 ⁻³ kg = 10 ³ mg = 10 ⁶ µg 1 mg/kg = 1 ppm = 1000 ppb
PRODUCT NAME	SERVING SIZE	
LABORATORY: COLUMBIA LABORATORIES	OREGON ACCREDITATION: OR100028	

POTENCY	PER SERVING	PER GRAM	REGULATORY ACTION LEVEL
Cannabidiol (CBD)	mg/serving	mg/g	N/A
Total THC (d9-THC, d8-THC, THCA)	mg/serving	mg/g	3 mg/g
Cannabigerol (CBG)	mg/serving	mg/g	N/A
Cannabinol (CBN)	mg/serving	mg/g	N/A
Cannabichromene (CBC)	mg/serving	mg/g	N/A
Tetrahydrocannabinolic Acid (THCA)	mg/serving	mg/g	N/A
Delta-9-THC (d9-THC)	mg/serving	mg/g	N/A
Delta-8-THC (d8-THC)	mg/serving	mg/g	N/A

HEAVY METALS	PER SERVING	PER GRAM	REGULATORY ACTION LEVEL
Arsenic	µg/serving	µg/g	10 µg/day ^[1]
Cadmium	µg/serving	µg/g	4.1 µg/day ^[1]
Lead	µg/serving	µg/g	3.5 µg/day ^[2]
Mercury	µg/serving	µg/g	2 µg/day ^[1]

PESTICIDES	REGULATORY ACTION LEVEL
None of the 59 pesticides tested found above limit of detection in the sample.	10 ppb ^[1]

RESIDUAL SOLVENTS
None of the 36 residual solvents tested found above limit of quantitation in the sample.

MICROBIAL	PASS/FAIL
Yeast & Mold	Pass
Coliform	Pass

TERPENES	% OF SAMPLE
Farnesene	%
β-Caryophyllene	%
α-Bisabolol	%

TERPENES	% OF SAMPLE
Guaiol	%
Humulene	%
Caryophyllene Oxide	%

1. AMERICAN HERBAL PHARMACOPOEIA. (2014). CANNABIS INFLORESCENCE: STANDARDS OF IDENTITY, ANALYSIS, AND QUALITY CONTROL. WASHINGTON DC: AHP.

2. US FOOD AND DRUG ADMINISTRATION. (2019). LEAD IN FOOD, FOODWARES, AND DIETARY SUPPLEMENTS. WASHINGTON DC: FDA. US FOOD AND DRUG ADMINISTRATION. (2019). LEAD IN FOOD, FOODWARES, AND DIETARY SUPPLEMENTS. WASHINGTON DC: FDA.



12423 NE Whitaker Way
 Portland, OR 97230
 503-254-1794



Report Number: 21-001618/D02.R00
Report Date: 02/22/2021
ORELAP#: OR100028
Purchase Order:
Received: 02/16/21 14:29

Customer: Etz Hayim Holdings
Product identity: FORM-CL88-HPTN
Client/Metric ID: .
Laboratory ID: 21-001618-0001

Summary

Potency:

Analyte per 1ml	Result	Limits	Units	Status	
CBC per 1ml [†]	2.40		mg/1ml		CBD-Total per 1ml 51.8 mg/1ml
CBD per 1ml	51.3		mg/1ml		
CBD-A per 1ml	0.534		mg/1ml		THC-Total per 1ml 1.96 mg/1ml
CBDV per 1ml [†]	0.291		mg/1ml		
CBG per 1ml [†]	1.10		mg/1ml		(Reported in milligrams per serving)
CBN per 1ml	0.0405		mg/1ml		
Δ9-THC per 1ml	1.96		mg/1ml		



12423 NE Whitaker Way
 Portland, OR 97230
 503-254-1794

Report Number: 21-001618/D02.R00
Report Date: 02/22/2021
ORELAP#: OR100028
Purchase Order:
Received: 02/16/21 14:29



Customer: Etz Hayim Holdings
 16427 NE Airport Way
 PORTLAND 97230
 United States

Product identity: FORM-CL88-HPTN

Client/Metric ID: .

Sample Date:

Laboratory ID: 21-001618-0001

Temp: 21.2 °C

Serving Size #1: 0.93 g

Density: 0.9300 g/ml

Sample Results

Potency per 1ml	Method J AOAC 2015 V98-6 (mod)	Batch: 2101488	Analyze: 2/18/21 4:38:00 PM		
Analyte	Result	Limits	Units	LOQ	Notes
CBC per 1ml [†]	2.40		mg/1ml	0.0298	
CBC-A per 1ml [†]	< LOQ		mg/1ml	0.0298	
CBC-Total per 1ml [†]	2.40		mg/1ml	0.0560	
CBD per 1ml	51.3		mg/1ml	0.298	
CBD-A per 1ml	0.534		mg/1ml	0.0298	
CBD-Total per 1ml	51.8		mg/1ml	0.324	
CBDV per 1ml [†]	0.291		mg/1ml	0.0298	
CBDV-A per 1ml [†]	< LOQ		mg/1ml	0.0298	
CBDV-Total per 1ml [†]	0.291		mg/1ml	0.0556	
CBG per 1ml [†]	1.10		mg/1ml	0.0298	
CBG-A per 1ml [†]	< LOQ		mg/1ml	0.0298	
CBG-Total per 1ml [†]	1.10		mg/1ml	0.0556	
CBL per 1ml [†]	< LOQ		mg/1ml	0.0298	
CBN per 1ml	0.0405		mg/1ml	0.0298	
Δ8-THC per 1ml [†]	< LOQ		mg/1ml	0.0298	
Δ9-THC per 1ml	1.96		mg/1ml	0.0298	
THC-A per 1ml	< LOQ		mg/1ml	0.0298	
THC-Total per 1ml	1.96		mg/1ml	0.0560	
THCV per 1ml [†]	< LOQ		mg/1ml	0.0298	
THCV-A per 1ml [†]	< LOQ		mg/1ml	0.0298	
THCV-Total per 1ml [†]	< LOQ		mg/1ml	0.0560	
Total Cannabinoids 1ml[†]	57.7		mg/1ml		



12423 NE Whitaker Way
Portland, OR 97230
503-254-1794



Report Number: 21-001618/D03.R00
Report Date: 02/22/2021
ORELAP#: OR100028
Purchase Order:
Received: 02/16/21 14:29

Customer: Etz Hayim Holdings
Product identity: FORM-CL88-HPTN
Client/Metric ID: .
Laboratory ID: 21-001618-0002

Summary

Microbiology:

Less than LOQ for all analytes.



12423 NE Whitaker Way
Portland, OR 97230
503-254-1794



Report Number: 21-001618/D03.R00
Report Date: 02/22/2021
ORELAP#: OR100028
Purchase Order:
Received: 02/16/21 14:29

Customer: Etz Hayim Holdings
16427 NE Airport Way
PORTLAND 97230
United States

Product identity: FORM-CL88-HPTN

Client/Metric ID: .

Sample Date:

Laboratory ID: 21-001618-0002

Temp: 21.2 °C

Sample Results

Microbiology

Analyte	Result	Limits	Units	LOQ	Batch	Analyze	Method	Notes
E.coli	< LOQ		cfu/g	10	2101358	02/19/21	AOAC 991.14 (Petrifilm)	X, I
Total Coliforms	< LOQ		cfu/g	10	2101358	02/19/21	AOAC 991.14 (Petrifilm)	X, I
Mold (RAPID Petrifilm)	< LOQ		cfu/g	10	2101357	02/19/21	AOAC 2014.05 (RAPID)	X, I
Yeast (RAPID Petrifilm)	< LOQ		cfu/g	10	2101357	02/19/21	AOAC 2014.05 (RAPID)	X, I



12423 NE Whitaker Way
Portland, OR 97230
503-254-1794



Report Number: 21-001618/D04.R00
Report Date: 02/22/2021
ORELAP#: OR100028
Purchase Order:
Received: 02/16/21 14:29

Customer: Etz Hayim Holdings
Product identity: FORM-CL88-HPTN
Client/Metric ID: .
Laboratory ID: 21-001618-0003

Summary

Residual Solvents:

All analytes passing and less than LOQ.

Pesticides:

All analytes passing and less than LOQ.

Terpenes:

Analyte	Percent by weight	Percent of Total	Analyte	Percent by weight	Percent of Total
β -Caryophyllene [†]	0.131	40.68%	α -Bisabolol [†]	0.0766	23.79%
Humulene [†]	0.0585	18.17%	(-)-caryophyllene oxide [†]	0.0297	9.22%
β -Myrcene [†]	0.0261	8.11%	Total Terpenes[†]	0.322	100.00%

Metals:

Less than LOQ for all analytes.



12423 NE Whitaker Way
 Portland, OR 97230
 503-254-1794

Report Number: 21-001618/D04.R00
Report Date: 02/22/2021
ORELAP#: OR100028
Purchase Order:
Received: 02/16/21 14:29



Customer: Etz Hayim Holdings
 16427 NE Airport Way
 PORTLAND 97230
 United States

Product identity: FORM-CL88-HPTN

Client/Metric ID: .

Sample Date:

Laboratory ID: 21-001618-0003

Temp: 21.2 °C

Sample Results

Solvents											Method Residual Solvents by GC/MS					Units µg/g		Batch 2101379		Analyze 02/17/21 09:11 AM				
Analyte	Result	Limits	LOQ	Status	Notes	Analyte	Result	Limits	LOQ	Status	Notes													
1,4-Dioxane	< LOQ	380	100	pass		2-Butanol	< LOQ	5000	200	pass														
2-Ethoxyethanol	< LOQ	160	30.0	pass		2-Methylbutane	< LOQ		200															
2-Methylpentane	< LOQ		30.0			2-Propanol (IPA)	< LOQ	5000	200	pass														
2,2-Dimethylbutane	< LOQ		30.0			2,2-Dimethylpropane	< LOQ		200															
2,3-Dimethylbutane	< LOQ		30.0			3-Methylpentane	< LOQ		30.0															
Acetone	< LOQ	5000	200	pass		Acetonitrile	< LOQ	410	100	pass														
Benzene	< LOQ	2.00	1.00	pass		Butanes (sum)	< LOQ	5000	400	pass														
Cyclohexane	< LOQ	3880	200	pass		Ethanol ¹	< LOQ		200															
Ethyl acetate	< LOQ	5000	200	pass		Ethyl benzene	< LOQ		200															
Ethyl ether	< LOQ	5000	200	pass		Ethylene glycol	< LOQ	620	200	pass														
Ethylene oxide	< LOQ	50.0	30.0	pass		Hexanes (sum)	< LOQ	290	150	pass														
Isopropyl acetate	< LOQ	5000	200	pass		Isopropylbenzene	< LOQ	70.0	30.0	pass														
m,p-Xylene	< LOQ		200			Methanol	< LOQ	3000	200	pass														
Methylene chloride	< LOQ	600	200	pass		Methylpropane	< LOQ		200															
n-Butane	< LOQ		200			n-Heptane	< LOQ	5000	200	pass														
n-Hexane	< LOQ		30.0			n-Pentane	< LOQ		200															
o-Xylene	< LOQ		200			Pentanes (sum)	< LOQ	5000	600	pass														
Propane	< LOQ	5000	200	pass		Tetrahydrofuran	< LOQ	720	100	pass														
Toluene	< LOQ	890	100	pass		Total Xylenes	< LOQ		400															
Total Xylenes and Ethyl	< LOQ	2170	600	pass																				



12423 NE Whitaker Way
 Portland, OR 97230
 503-254-1794



Report Number: 21-001618/D04.R00
Report Date: 02/22/2021
ORELAP#: OR100028
Purchase Order:
Received: 02/16/21 14:29

Pesticides											
Method AOAC 2007.01 & EN 15662 (mod) Units mg/kg Batch 2101468 Analyze 02/18/21 04:52 PM											
Analyte	Result	Limits	LOQ	Status	Notes	Analyte	Result	Limits	LOQ	Status	Notes
Abamectin	< LOQ	0.50	0.250	pass		Acephate	< LOQ	0.40	0.250	pass	
Acequinocyl	< LOQ	2.0	1.00	pass		Acetamiprid	< LOQ	0.20	0.100	pass	
Aldicarb	< LOQ	0.40	0.200	pass		Azoxystrobin	< LOQ	0.20	0.100	pass	
Bifenazate	< LOQ	0.20	0.100	pass		Bifenthrin	< LOQ	0.20	0.100	pass	
Boscalid	< LOQ	0.40	0.200	pass		Carbaryl	< LOQ	0.20	0.100	pass	
Carbofuran	< LOQ	0.20	0.100	pass		Chlorantraniliprole	< LOQ	0.20	0.100	pass	
Chlorfenapyr	< LOQ	1.0	0.500	pass		Chlorpyrifos	< LOQ	0.20	0.100	pass	
Clofentezine	< LOQ	0.20	0.100	pass		Cyfluthrin	< LOQ	1.0	0.500	pass	
Cypermethrin	< LOQ	1.0	0.500	pass		Daminozide	< LOQ	1.0	0.500	pass	
Diazinon	< LOQ	0.20	0.100	pass		Dichlorvos	< LOQ	1.0	0.500	pass	
Dimethoate	< LOQ	0.20	0.100	pass		Ethoprophos	< LOQ	0.20	0.100	pass	
Etofenprox	< LOQ	0.40	0.200	pass		Etoxazole	< LOQ	0.20	0.100	pass	
Fenoxycarb	< LOQ	0.20	0.100	pass		Fenpyroximate	< LOQ	0.40	0.200	pass	
Fipronil	< LOQ	0.40	0.200	pass		Fonicamid	< LOQ	1.0	0.400	pass	
Fludioxonil	< LOQ	0.40	0.200	pass		Hexythiazox	< LOQ	1.0	0.400	pass	
Imazalil	< LOQ	0.20	0.100	pass		Imidacloprid	< LOQ	0.40	0.200	pass	
Kresoxim-methyl	< LOQ	0.40	0.200	pass		Malathion	< LOQ	0.20	0.100	pass	
Metalaxyl	< LOQ	0.20	0.100	pass		Methiocarb	< LOQ	0.20	0.100	pass	
Methomyl	< LOQ	0.40	0.200	pass		MGK-264	< LOQ	0.20	0.100	pass	
Myclobutanil	< LOQ	0.20	0.100	pass		Naled	< LOQ	0.50	0.250	pass	
Oxamyl	< LOQ	1.0	0.500	pass		Paclobutrazole	< LOQ	0.40	0.200	pass	
Parathion-Methyl	< LOQ	0.20	0.200	pass		Permethrin	< LOQ	0.20	0.100	pass	
Phosmet	< LOQ	0.20	0.100	pass		Piperonyl butoxide	< LOQ	2.0	1.00	pass	
Prallethrin	< LOQ	0.20	0.200	pass		Propiconazole	< LOQ	0.40	0.200	pass	
Propoxur	< LOQ	0.20	0.100	pass		Pyrethrin I (total)	< LOQ	1.0	0.500	pass	
Pyridaben	< LOQ	0.20	0.100	pass		Spinosad	< LOQ	0.20	0.100	pass	
Spiromesifen	< LOQ	0.20	0.100	pass		Spirotetramat	< LOQ	0.20	0.100	pass	
Spiroxamine	< LOQ	0.40	0.200	pass		Tebuconazole	< LOQ	0.40	0.200	pass	
Thiacloprid	< LOQ	0.20	0.100	pass		Thiamethoxam	< LOQ	0.20	0.100	pass	
Trifloxystrobin	< LOQ	0.20	0.100	pass							

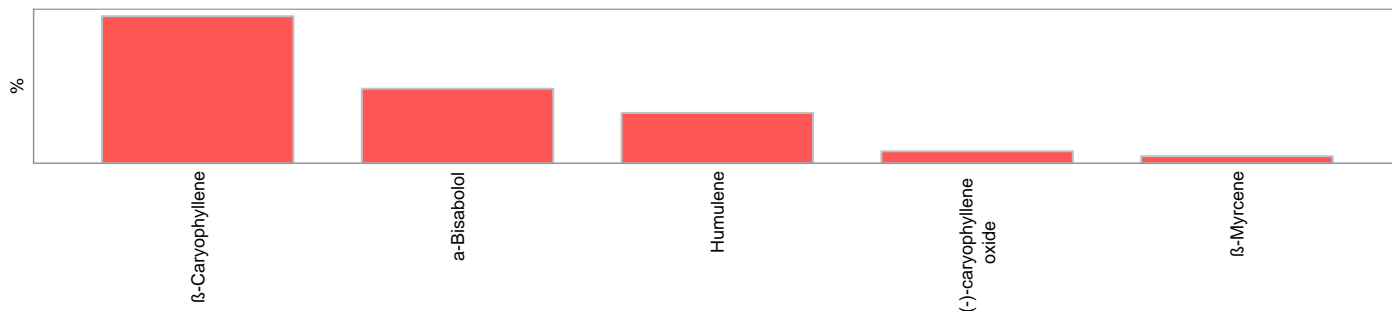


12423 NE Whitaker Way
Portland, OR 97230
503-254-1794

Report Number: 21-001618/D04.R00
Report Date: 02/22/2021
ORELAP#: OR100028
Purchase Order:
Received: 02/16/21 14:29



Terpenes				Method J AOAC 2015 V98-6	Units %	Batch 2101382	Analyze 02/17/21 09:28 AM		
Analyte	Result	LOQ	% of Total	Notes	Analyte	Result	LOQ	% of Total	Notes
β-Caryophyllene [†]	0.131	0.020	40.68%		a-Bisabolol [†]	0.0766	0.020	23.79%	
Humulene [†]	0.0585	0.020	18.17%		(-)-caryophyllene oxide [†]	0.0297	0.020	9.22%	
β-Myrcene [†]	0.0261	0.020	8.11%		(-)-a-Terpineol [†]	< LOQ	0.020	0.00%	
(-)-Guaiol [†]	< LOQ	0.020	0.00%		(-)-Isopulegol [†]	< LOQ	0.020	0.00%	
(-)-β-Pinene [†]	< LOQ	0.020	0.00%		(+)-Borneol [†]	< LOQ	0.020	0.00%	
(+)-Cedrol [†]	< LOQ	0.020	0.00%		(+)-fenchol [†]	< LOQ	0.020	0.00%	
(+)-Pulegone [†]	< LOQ	0.020	0.00%		(±)-Camphor [†]	< LOQ	0.020	0.00%	
(±)-cis-Nerolidol [†]	< LOQ	0.020	0.00%		(±)-fenchone [†]	< LOQ	0.020	0.00%	
(±)-trans-Nerolidol [†]	< LOQ	0.020	0.00%		(R)-(+)-Limonene [†]	< LOQ	0.020	0.00%	
a-cedrene [†]	< LOQ	0.020	0.00%		a-phellandrene [†]	< LOQ	0.020	0.00%	
a-pinene [†]	< LOQ	0.020	0.00%		a-Terpinene [†]	< LOQ	0.020	0.00%	
Camphene [†]	< LOQ	0.020	0.00%		cis-β-Ocimene [†]	< LOQ	0.006	0.00%	
d-3-Carene [†]	< LOQ	0.020	0.00%		Eucalyptol [†]	< LOQ	0.020	0.00%	
farnesene [†]	< LOQ	0.020	0.00%		gamma-Terpinene [†]	< LOQ	0.020	0.00%	
Geraniol [†]	< LOQ	0.020	0.00%		Geranyl acetate [†]	< LOQ	0.020	0.00%	
Isoborneol [†]	< LOQ	0.020	0.00%		Linalool [†]	< LOQ	0.020	0.00%	
Menthol [†]	< LOQ	0.020	0.00%		nerol [†]	< LOQ	0.020	0.00%	
p-Cymene [†]	< LOQ	0.020	0.00%		Sabinene [†]	< LOQ	0.020	0.00%	
Sabinene hydrate [†]	< LOQ	0.020	0.00%		Terpinolene [†]	< LOQ	0.020	0.00%	
trans-β-Ocimene [†]	< LOQ	0.013	0.00%		valencene [†]	< LOQ	0.020	0.00%	
Total Terpenes	0.322								



Metals									
Analyte	Result	Limits	Units	LOQ	Batch	Analyze	Method	Notes	
Arsenic	< LOQ		mg/kg	0.0408	2101431	02/17/21	AOAC 2013.06 (mod.)	X	
Cadmium	< LOQ		mg/kg	0.0408	2101431	02/17/21	AOAC 2013.06 (mod.)	X	
Lead	< LOQ		mg/kg	0.0408	2101431	02/17/21	AOAC 2013.06 (mod.)	X	
Mercury	< LOQ		mg/kg	0.0204	2101431	02/17/21	AOAC 2013.06 (mod.)	X	