

CONSOLIDATED TEST RESULTS SUMMARY

Please see the following pages for full test results.

| | | |
|--|---------------------------------------|---|
| BULK SKU | BATCH # | NR: Not Reported NA: Not Available LOQ: Limit Of Quantitation LOD: Limit Of Detection 1 g = 10 ⁻³ kg = 10 ³ mg = 10 ⁶ µg 1 mg/kg = 1 ppm = 1000 ppb |
| PRODUCT NAME | SERVING SIZE | |
| LABORATORY: COLUMBIA LABORATORIES | OREGON ACCREDITATION: OR100028 | |

| POTENCY | PER SERVING | PER GRAM | REGULATORY ACTION LEVEL |
|------------------------------------|-------------|----------|-------------------------|
| Cannabidiol (CBD) | mg/serving | mg/g | N/A |
| Total THC (d9-THC, d8-THC, THCA) | mg/serving | mg/g | 3 mg/g |
| Cannabigerol (CBG) | mg/serving | mg/g | N/A |
| Cannabinol (CBN) | mg/serving | mg/g | N/A |
| Cannabichromene (CBC) | mg/serving | mg/g | N/A |
| Tetrahydrocannabinolic Acid (THCA) | mg/serving | mg/g | N/A |
| Delta-9-THC (d9-THC) | mg/serving | mg/g | N/A |
| Delta-8-THC (d8-THC) | mg/serving | mg/g | N/A |

| HEAVY METALS | PER SERVING | PER GRAM | REGULATORY ACTION LEVEL |
|--------------|-------------|----------|---------------------------|
| Arsenic | µg/serving | µg/g | 10 µg/day ^[1] |
| Cadmium | µg/serving | µg/g | 4.1 µg/day ^[1] |
| Lead | µg/serving | µg/g | 3.5 µg/day ^[2] |
| Mercury | µg/serving | µg/g | 2 µg/day ^[1] |

| PESTICIDES | REGULATORY ACTION LEVEL |
|--|-------------------------|
| None of the 59 pesticides tested found above limit of detection in the sample. | 10 ppb ^[1] |

| RESIDUAL SOLVENTS |
|--|
| None of the 36 residual solvents tested found above limit of quantitation in the sample. |

| MICROBIAL | PASS/FAIL |
|--------------|-----------|
| Yeast & Mold | Pass |
| Coliform | Pass |

| TERPENES | % OF SAMPLE |
|-----------------|-------------|
| Farnesene | % |
| β-Caryophyllene | % |
| α-Bisabolol | % |

| TERPENES | % OF SAMPLE |
|---------------------|-------------|
| Guaiol | % |
| Humulene | % |
| Caryophyllene Oxide | % |

1. AMERICAN HERBAL PHARMACOPOEIA. (2014). CANNABIS INFLORESCENCE: STANDARDS OF IDENTITY, ANALYSIS, AND QUALITY CONTROL. WASHINGTON DC: AHP.

2. US FOOD AND DRUG ADMINISTRATION. (2019). LEAD IN FOOD, FOODWARES, AND DIETARY SUPPLEMENTS. WASHINGTON DC: FDA. US FOOD AND DRUG ADMINISTRATION. (2019). LEAD IN FOOD, FOODWARES, AND DIETARY SUPPLEMENTS. WASHINGTON DC: FDA.



12423 NE Whitaker Way
Portland, OR 97230
503-254-1794



Report Number: 21-000927/D04.R00
Report Date: 02/01/2021
ORELAP#: OR100028
Purchase Order:
Received: 01/26/21 16:48

Customer: Etz Hayim Holdings
Product identity: FORM-DA50-HPTN.CM
Client/Metric ID: .
Laboratory ID: 21-000927-0001

Sample Date: 01/26/21 11:34

Summary

Potency:

| Analyte per 1ml | Result | Limits | Units | Status | |
|---------------------------|--------|--------|--------|--------|--------------------------------------|
| CBC per 1ml [†] | 2.32 | | mg/1ml | | CBD-Total per 1ml 51.0 mg/1ml |
| CBD per 1ml | 51.0 | | mg/1ml | | |
| CBDV per 1ml [†] | 0.277 | | mg/1ml | | THC-Total per 1ml 1.95 mg/1ml |
| CBG per 1ml [†] | 1.07 | | mg/1ml | | |
| CBL per 1ml [†] | 0.0629 | | mg/1ml | | (Reported in milligrams per serving) |
| Δ9-THC per 1ml | 1.95 | | mg/1ml | | |



12423 NE Whitaker Way
 Portland, OR 97230
 503-254-1794

Report Number: 21-000927/D04.R00
Report Date: 02/01/2021
ORELAP#: OR100028
Purchase Order:
Received: 01/26/21 16:48



Customer: Etz Hayim Holdings
 16427 NE Airport Way
 PORTLAND 97230
 United States

Product identity: FORM-DA50-HPTN.CM

Client/Metric ID: .

Sample Date: 01/26/21 11:34

Laboratory ID: 21-000927-0001

Temp: 19.7 °C

Serving Size #1: 0.945 g

Density: 0.9450 g/ml

Sample Results

| Potency per 1ml | Method J AOAC 2015 V98-6 (mod) | Batch: 2100869 | Analyze: 1/29/21 4:06:00 AM | | |
|---|--------------------------------|----------------|-----------------------------|--------|-------|
| Analyte | Result | Limits | Units | LOQ | Notes |
| CBC per 1ml [†] | 2.32 | | mg/1ml | 0.0311 | |
| CBC-A per 1ml [†] | < LOQ | | mg/1ml | 0.0311 | |
| CBC-Total per 1ml [†] | 2.32 | | mg/1ml | 0.0584 | |
| CBD per 1ml | 51.0 | | mg/1ml | 0.311 | |
| CBD-A per 1ml | < LOQ | | mg/1ml | 0.0311 | |
| CBD-Total per 1ml | 51.0 | | mg/1ml | 0.338 | |
| CBDV per 1ml [†] | 0.277 | | mg/1ml | 0.0311 | |
| CBDV-A per 1ml [†] | < LOQ | | mg/1ml | 0.0311 | |
| CBDV-Total per 1ml [†] | 0.277 | | mg/1ml | 0.0580 | |
| CBG per 1ml [†] | 1.07 | | mg/1ml | 0.0311 | |
| CBG-A per 1ml [†] | < LOQ | | mg/1ml | 0.0311 | |
| CBG-Total per 1ml [†] | 1.07 | | mg/1ml | 0.0580 | |
| CBL per 1ml [†] | 0.0629 | | mg/1ml | 0.0311 | |
| CBN per 1ml | < LOQ | | mg/1ml | 0.0311 | |
| Δ8-THC per 1ml [†] | < LOQ | | mg/1ml | 0.0311 | |
| Δ9-THC per 1ml | 1.95 | | mg/1ml | 0.0311 | |
| THC-A per 1ml | < LOQ | | mg/1ml | 0.0311 | |
| THC-Total per 1ml | 1.95 | | mg/1ml | 0.0584 | |
| THCV per 1ml [†] | < LOQ | | mg/1ml | 0.0311 | |
| THCV-A per 1ml [†] | < LOQ | | mg/1ml | 0.0311 | |
| THCV-Total per 1ml [†] | < LOQ | | mg/1ml | 0.0584 | |
| Total Cannabinoids 1ml[†] | 56.7 | | mg/1ml | | |



12423 NE Whitaker Way
Portland, OR 97230
503-254-1794



Report Number: 21-000927/D03.R00
Report Date: 02/01/2021
ORELAP#: OR100028
Purchase Order:
Received: 01/26/21 16:48

Customer: Etz Hayim Holdings
Product identity: FORM-DA50-HPTN.CM
Client/Metric ID: .
Laboratory ID: 21-000927-0002

Sample Date: 01/26/21 11:34

Summary

Microbiology:

Less than LOQ for all analytes.



12423 NE Whitaker Way
Portland, OR 97230
503-254-1794



Report Number: 21-000927/D03.R00
Report Date: 02/01/2021
ORELAP#: OR100028
Purchase Order:
Received: 01/26/21 16:48

Customer: Etz Hayim Holdings
16427 NE Airport Way
PORTLAND 97230
United States

Product identity: FORM-DA50-HPTN.CM

Client/Metric ID: .

Sample Date: 01/26/21 11:34

Laboratory ID: 21-000927-0002

Temp: 19.7 °C

Sample Results

Microbiology

| Analyte | Result | Limits | Units | LOQ | Batch | Analyze | Method | Notes |
|-------------------------|--------|--------|-------|-----|---------|----------|-------------------------|-------|
| E.coli | < LOQ | | cfu/g | 10 | 2100768 | 01/29/21 | AOAC 991.14 (Petrifilm) | X, I |
| Total Coliforms | < LOQ | | cfu/g | 10 | 2100768 | 01/29/21 | AOAC 991.14 (Petrifilm) | X, I |
| Mold (RAPID Petrifilm) | < LOQ | | cfu/g | 10 | 2100769 | 01/29/21 | AOAC 2014.05 (RAPID) | X, I |
| Yeast (RAPID Petrifilm) | < LOQ | | cfu/g | 10 | 2100769 | 01/29/21 | AOAC 2014.05 (RAPID) | X, I |



12423 NE Whitaker Way
 Portland, OR 97230
 503-254-1794



Report Number: 21-000927/D02.R00
Report Date: 02/01/2021
ORELAP#: OR100028
Purchase Order:
Received: 01/26/21 16:48

Customer: Etz Hayim Holdings
Product identity: FORM-DA50-HPTN.CM
Client/Metric ID: .
Laboratory ID: 21-000927-0003

Sample Date: 01/26/21 11:34

Summary

Residual Solvents:

All analytes passing and less than LOQ.

Pesticides:

All analytes passing and less than LOQ.

Terpenes:

| Analyte | Percent by weight | Percent of Total | Analyte | Percent by weight | Percent of Total |
|--------------------------|-------------------|------------------|------------------------|-------------------|------------------|
| β-Caryophyllene† | 0.166 | 36.97% | α-Bisabolol† | 0.0912 | 20.31% |
| Humulene† | 0.0604 | 13.45% | Menthol† | 0.0436 | 9.71% |
| (-)-caryophyllene oxide† | 0.0372 | 8.29% | β-Myrcene† | 0.0302 | 6.73% |
| (R)-(+)-Limonene† | 0.0208 | 4.63% | Total Terpenes† | 0.449 | 100.00% |

Metals:

Less than LOQ for all analytes.



12423 NE Whitaker Way
 Portland, OR 97230
 503-254-1794

Report Number: 21-000927/D02.R00
Report Date: 02/01/2021
ORELAP#: OR100028
Purchase Order:
Received: 01/26/21 16:48



Customer: Etz Hayim Holdings
 16427 NE Airport Way
 PORTLAND 97230
 United States

Product identity: FORM-DA50-HPTN.CM

Client/Metric ID: .

Sample Date: 01/26/21 11:34

Laboratory ID: 21-000927-0003

Temp: 19.7 °C

Sample Results

| Solvents | | Method EPA5021A | | | | Units µg/g | Batch 2100781 | Analyze 01/27/21 10:53 AM | | | |
|-------------------------|--------|-----------------|------|--------|-------|----------------------|---------------|---------------------------|------|--------|-------|
| Analyte | Result | Limits | LOQ | Status | Notes | Analyte | Result | Limits | LOQ | Status | Notes |
| 1,4-Dioxane | < LOQ | 380 | 100 | pass | | 2-Butanol | < LOQ | 5000 | 200 | pass | |
| 2-Ethoxyethanol | < LOQ | 160 | 30.0 | pass | | 2-Methylbutane | < LOQ | | 200 | | |
| 2-Methylpentane | < LOQ | | 30.0 | | | 2-Propanol (IPA) | < LOQ | 5000 | 200 | pass | |
| 2,2-Dimethylbutane | < LOQ | | 30.0 | | | 2,2-Dimethylpropane | < LOQ | | 200 | | |
| 2,3-Dimethylbutane | < LOQ | | 30.0 | | | 3-Methylpentane | < LOQ | | 30.0 | | |
| Acetone | < LOQ | 5000 | 200 | pass | | Acetonitrile | < LOQ | 410 | 100 | pass | |
| Benzene | < LOQ | 2.00 | 1.00 | pass | | Butanes (sum) | < LOQ | 5000 | 400 | pass | |
| Cyclohexane | < LOQ | 3880 | 200 | pass | | Ethanol ¹ | < LOQ | | 200 | | |
| Ethyl acetate | < LOQ | 5000 | 200 | pass | | Ethyl benzene | < LOQ | | 200 | | |
| Ethyl ether | < LOQ | 5000 | 200 | pass | | Ethylene glycol | < LOQ | 620 | 200 | pass | |
| Ethylene oxide | < LOQ | 50.0 | 30.0 | pass | | Hexanes (sum) | < LOQ | 290 | 150 | pass | |
| Isopropyl acetate | < LOQ | 5000 | 200 | pass | | Isopropylbenzene | < LOQ | 70.0 | 30.0 | pass | |
| m,p-Xylene | < LOQ | | 200 | | | Methanol | < LOQ | 3000 | 200 | pass | |
| Methylene chloride | < LOQ | 600 | 200 | pass | | Methylpropane | < LOQ | | 200 | | |
| n-Butane | < LOQ | | 200 | | | n-Heptane | < LOQ | 5000 | 200 | pass | |
| n-Hexane | < LOQ | | 30.0 | | | n-Pentane | < LOQ | | 200 | | |
| o-Xylene | < LOQ | | 200 | | | Pentanes (sum) | < LOQ | 5000 | 600 | pass | |
| Propane | < LOQ | 5000 | 200 | pass | | Tetrahydrofuran | < LOQ | 720 | 100 | pass | |
| Toluene | < LOQ | 890 | 100 | pass | | Total Xylenes | < LOQ | | 400 | | |
| Total Xylenes and Ethyl | < LOQ | 2170 | 600 | pass | | | | | | | |



12423 NE Whitaker Way
 Portland, OR 97230
 503-254-1794



Report Number: 21-000927/D02.R00
Report Date: 02/01/2021
ORELAP#: OR100028
Purchase Order:
Received: 01/26/21 16:48

| Pesticides | | | | | | | | | | | |
|--|--------|--------|-------|--------|-------|---------------------|--------|--------|-------|--------|-------|
| Method AOAC 2007.01 & EN 15662 (mod) Units mg/kg Batch 2100837 Analyze 01/28/21 11:54 AM | | | | | | | | | | | |
| Analyte | Result | Limits | LOQ | Status | Notes | Analyte | Result | Limits | LOQ | Status | Notes |
| Abamectin | < LOQ | 0.50 | 0.250 | pass | | Acephate | < LOQ | 0.40 | 0.250 | pass | |
| Acequinocyl | < LOQ | 2.0 | 1.00 | pass | | Acetamiprid | < LOQ | 0.20 | 0.100 | pass | |
| Aldicarb | < LOQ | 0.40 | 0.200 | pass | | Azoxystrobin | < LOQ | 0.20 | 0.100 | pass | |
| Bifenazate | < LOQ | 0.20 | 0.100 | pass | | Bifenthrin | < LOQ | 0.20 | 0.100 | pass | |
| Boscalid | < LOQ | 0.40 | 0.200 | pass | | Carbaryl | < LOQ | 0.20 | 0.100 | pass | |
| Carbofuran | < LOQ | 0.20 | 0.100 | pass | | Chlorantraniliprole | < LOQ | 0.20 | 0.100 | pass | |
| Chlorfenapyr | < LOQ | 1.0 | 0.500 | pass | | Chlorpyrifos | < LOQ | 0.20 | 0.100 | pass | |
| Clofentezine | < LOQ | 0.20 | 0.100 | pass | | Cyfluthrin | < LOQ | 1.0 | 0.500 | pass | |
| Cypermethrin | < LOQ | 1.0 | 0.500 | pass | | Daminozide | < LOQ | 1.0 | 0.500 | pass | |
| Diazinon | < LOQ | 0.20 | 0.100 | pass | | Dichlorvos | < LOQ | 1.0 | 0.500 | pass | |
| Dimethoate | < LOQ | 0.20 | 0.100 | pass | | Ethoprophos | < LOQ | 0.20 | 0.100 | pass | |
| Etofenprox | < LOQ | 0.40 | 0.200 | pass | | Etoxazole | < LOQ | 0.20 | 0.100 | pass | |
| Fenoxycarb | < LOQ | 0.20 | 0.100 | pass | | Fenpyroximate | < LOQ | 0.40 | 0.200 | pass | |
| Fipronil | < LOQ | 0.40 | 0.200 | pass | | Fonicamid | < LOQ | 1.0 | 0.400 | pass | |
| Fludioxonil | < LOQ | 0.40 | 0.200 | pass | | Hexythiazox | < LOQ | 1.0 | 0.400 | pass | |
| Imazalil | < LOQ | 0.20 | 0.100 | pass | | Imidacloprid | < LOQ | 0.40 | 0.200 | pass | |
| Kresoxim-methyl | < LOQ | 0.40 | 0.200 | pass | | Malathion | < LOQ | 0.20 | 0.100 | pass | |
| Metalaxyl | < LOQ | 0.20 | 0.100 | pass | | Methiocarb | < LOQ | 0.20 | 0.100 | pass | |
| Methomyl | < LOQ | 0.40 | 0.200 | pass | | MGK-264 | < LOQ | 0.20 | 0.100 | pass | |
| Myclobutanil | < LOQ | 0.20 | 0.100 | pass | | Naled | < LOQ | 0.50 | 0.250 | pass | |
| Oxamyl | < LOQ | 1.0 | 0.500 | pass | | Paclobutrazole | < LOQ | 0.40 | 0.200 | pass | |
| Parathion-Methyl | < LOQ | 0.20 | 0.200 | pass | | Permethrin | < LOQ | 0.20 | 0.100 | pass | |
| Phosmet | < LOQ | 0.20 | 0.100 | pass | | Piperonyl butoxide | < LOQ | 2.0 | 1.00 | pass | |
| Prallethrin | < LOQ | 0.20 | 0.200 | pass | | Propiconazole | < LOQ | 0.40 | 0.200 | pass | |
| Propoxur | < LOQ | 0.20 | 0.100 | pass | | Pyrethrin I (total) | < LOQ | 1.0 | 0.500 | pass | |
| Pyridaben | < LOQ | 0.20 | 0.100 | pass | | Spinosad | < LOQ | 0.20 | 0.100 | pass | |
| Spiromesifen | < LOQ | 0.20 | 0.100 | pass | | Spirotetramat | < LOQ | 0.20 | 0.100 | pass | |
| Spiroxamine | < LOQ | 0.40 | 0.200 | pass | | Tebuconazole | < LOQ | 0.40 | 0.200 | pass | |
| Thiacloprid | < LOQ | 0.20 | 0.100 | pass | | Thiamethoxam | < LOQ | 0.20 | 0.100 | pass | |
| Trifloxystrobin | < LOQ | 0.20 | 0.100 | pass | | | | | | | |

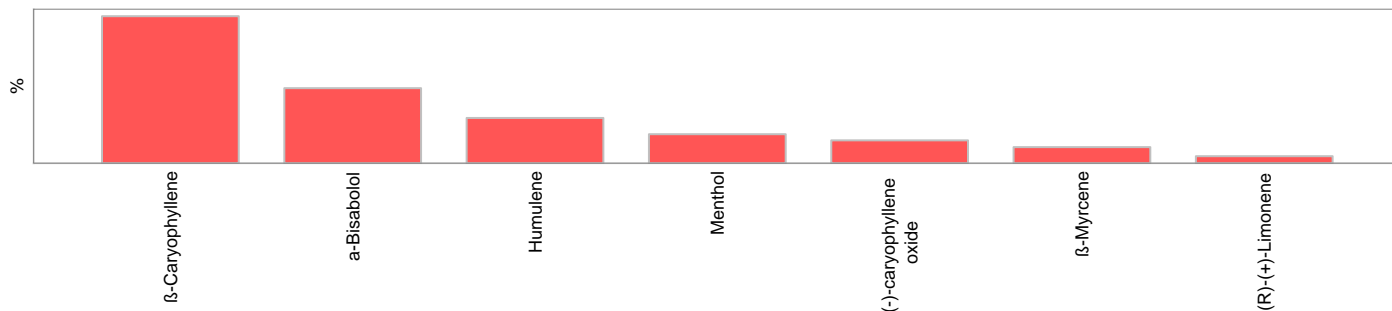


12423 NE Whitaker Way
Portland, OR 97230
503-254-1794

Report Number: 21-000927/D02.R00
Report Date: 02/01/2021
ORELAP#: OR100028
Purchase Order:
Received: 01/26/21 16:48



| Terpenes | | | | Method J AOAC 2015 V98-6 | Units % | Batch 2100778 | Analyze 01/27/21 10:07 AM | | |
|--------------------------------------|--------------|-------|------------|--------------------------|------------------------------|---------------|---------------------------|------------|-------|
| Analyte | Result | LOQ | % of Total | Notes | Analyte | Result | LOQ | % of Total | Notes |
| β-Caryophyllene [†] | 0.166 | 0.020 | 36.97% | | α-Bisabolol [†] | 0.0912 | 0.020 | 20.31% | |
| Humulene [†] | 0.0604 | 0.020 | 13.45% | | Menthol [†] | 0.0436 | 0.020 | 9.71% | |
| (-)-caryophyllene oxide [†] | 0.0372 | 0.020 | 8.29% | | β-Myrcene [†] | 0.0302 | 0.020 | 6.73% | |
| (R)-(+)-Limonene [†] | 0.0208 | 0.020 | 4.63% | | (-)-α-Terpineol [†] | < LOQ | 0.020 | 0.00% | |
| (-)-Guaiol [†] | < LOQ | 0.020 | 0.00% | | (-)-Isopulegol [†] | < LOQ | 0.020 | 0.00% | |
| (-)-β-Pinene [†] | < LOQ | 0.020 | 0.00% | | (+)-Borneol [†] | < LOQ | 0.020 | 0.00% | |
| (+)-Cedrol [†] | < LOQ | 0.020 | 0.00% | | (+)-fenchol [†] | < LOQ | 0.020 | 0.00% | |
| (+)-Pulegone [†] | < LOQ | 0.020 | 0.00% | | (±)-Camphor [†] | < LOQ | 0.020 | 0.00% | |
| (±)-cis-Nerolidol [†] | < LOQ | 0.020 | 0.00% | | (±)-fenchone [†] | < LOQ | 0.020 | 0.00% | |
| (±)-trans-Nerolidol [†] | < LOQ | 0.020 | 0.00% | | α-cedrene [†] | < LOQ | 0.020 | 0.00% | |
| α-phellandrene [†] | < LOQ | 0.020 | 0.00% | | α-pinene [†] | < LOQ | 0.020 | 0.00% | |
| α-Terpinene [†] | < LOQ | 0.020 | 0.00% | | Camphene [†] | < LOQ | 0.020 | 0.00% | |
| cis-β-Ocimene [†] | < LOQ | 0.006 | 0.00% | | d-3-Carene [†] | < LOQ | 0.020 | 0.00% | |
| Eucalyptol [†] | < LOQ | 0.020 | 0.00% | | farnesene [†] | < LOQ | 0.020 | 0.00% | |
| γ-Terpinene [†] | < LOQ | 0.020 | 0.00% | | Geraniol [†] | < LOQ | 0.020 | 0.00% | |
| Geranyl acetate [†] | < LOQ | 0.020 | 0.00% | | Isoborneol [†] | < LOQ | 0.020 | 0.00% | |
| Linalool [†] | < LOQ | 0.020 | 0.00% | | nerol [†] | < LOQ | 0.020 | 0.00% | |
| p-Cymene [†] | < LOQ | 0.020 | 0.00% | | Sabinene [†] | < LOQ | 0.020 | 0.00% | |
| Sabinene hydrate [†] | < LOQ | 0.020 | 0.00% | | Terpinolene [†] | < LOQ | 0.020 | 0.00% | |
| trans-β-Ocimene [†] | < LOQ | 0.013 | 0.00% | | valencene [†] | < LOQ | 0.020 | 0.00% | |
| Total Terpenes | 0.449 | | | | | | | | |



| Metals | | | | | | | | | |
|---------|--------|--------|-------|--------|---------|----------|---------------------|-------|--|
| Analyte | Result | Limits | Units | LOQ | Batch | Analyze | Method | Notes | |
| Arsenic | < LOQ | | mg/kg | 0.0413 | 2100808 | 01/27/21 | AOAC 2013.06 (mod.) | X | |
| Cadmium | < LOQ | | mg/kg | 0.0413 | 2100808 | 01/27/21 | AOAC 2013.06 (mod.) | X | |
| Lead | < LOQ | | mg/kg | 0.0413 | 2100808 | 01/27/21 | AOAC 2013.06 (mod.) | X | |
| Mercury | < LOQ | | mg/kg | 0.0206 | 2100808 | 01/27/21 | AOAC 2013.06 (mod.) | X | |