

CONSOLIDATED TEST RESULTS SUMMARY

Please see the following pages for full test results.

BULK SKU	BATCH #	NR: Not Reported NA: Not Available LOQ: Limit Of Quantitation LOD: Limit Of Detection 1 g = 10 ⁻³ kg = 10 ³ mg = 10 ⁶ µg 1 mg/kg = 1 ppm = 1000 ppb
PRODUCT NAME	SERVING SIZE	
LABORATORY: COLUMBIA LABORATORIES	OREGON ACCREDITATION: OR100028	

POTENCY	PER SERVING	PER GRAM	REGULATORY ACTION LEVEL
Cannabidiol (CBD)	mg/serving	mg/g	N/A
Total THC (d9-THC, d8-THC, THCA)	mg/serving	mg/g	3 mg/g
Cannabigerol (CBG)	mg/serving	mg/g	N/A
Cannabinol (CBN)	mg/serving	mg/g	N/A
Cannabichromene (CBC)	mg/serving	mg/g	N/A
Tetrahydrocannabinolic Acid (THCA)	mg/serving	mg/g	N/A
Delta-9-THC (d9-THC)	mg/serving	mg/g	N/A
Delta-8-THC (d8-THC)	mg/serving	mg/g	N/A

HEAVY METALS	PER SERVING	PER GRAM	REGULATORY ACTION LEVEL
Arsenic	µg/serving	µg/g	10 µg/day ^[1]
Cadmium	µg/serving	µg/g	4.1 µg/day ^[1]
Lead	µg/serving	µg/g	3.5 µg/day ^[2]
Mercury	µg/serving	µg/g	2 µg/day ^[1]

PESTICIDES	REGULATORY ACTION LEVEL
None of the 59 pesticides tested found above limit of detection in the sample.	10 ppb ^[1]

RESIDUAL SOLVENTS
None of the 36 residual solvents tested found above limit of quantitation in the sample.

MICROBIAL	PASS/FAIL
Yeast & Mold	Pass
Coliform	Pass
Water Activity	Pass

TERPENES	% OF SAMPLE
Farnesene	%
β-Caryophyllene	%
α-Bisabolol	%

TERPENES	% OF SAMPLE
Guaiol	%
Humulene	%
Caryophyllene Oxide	%

1. AMERICAN HERBAL PHARMACOPOEIA. (2014). CANNABIS INFLORESCENCE: STANDARDS OF IDENTITY, ANALYSIS, AND QUALITY CONTROL. WASHINGTON DC: AHP.

2. US FOOD AND DRUG ADMINISTRATION. (2019). LEAD IN FOOD, FOODWARES, AND DIETARY SUPPLEMENTS. WASHINGTON DC: FDA. US FOOD AND DRUG ADMINISTRATION. (2019). LEAD IN FOOD, FOODWARES, AND DIETARY SUPPLEMENTS. WASHINGTON DC: FDA.



12423 NE Whitaker Way
Portland, OR 97230
503-254-1794



Report Number: 21-000285/D09.R00
Report Date: 01/22/2021
ORELAP#: OR100028
Purchase Order:
Received: 01/11/21 12:29

Customer: Etz Hayim Holdings
Product identity: FORM-DA10-DRYCP50
Client/Metric ID: .
Laboratory ID: 21-000285-0007

Sample Date: 01/11/21 11:20

Summary

Residual Solvents:

All analytes passing and less than LOQ.

Pesticides:

All analytes passing and less than LOQ.

Terpenes:

Analyte	Percent by weight	Percent of Total	Analyte	Percent by weight	Percent of Total
β -Caryophyllene [†]	0.484	47.45%	(R)-(+)-Limonene [†]	0.155	15.20%
α -Bisabolol [†]	0.108	10.59%	Humulene [†]	0.103	10.10%
β -Myrcene [†]	0.0943	9.25%	(-)-caryophyllene oxide [†]	0.0488	4.78%
(-)-Guaiol [†]	0.0251	2.46%	Total Terpenes[†]	1.02	100.00%

Metals:

Less than LOQ for all analytes.



12423 NE Whitaker Way
 Portland, OR 97230
 503-254-1794

Report Number: 21-000285/D09.R00
Report Date: 01/22/2021
ORELAP#: OR100028
Purchase Order:
Received: 01/11/21 12:29



Customer: Etz Hayim Holdings
 16427 NE Airport Way
 PORTLAND 97230
 United States

Product identity: FORM-DA10-DRYCP50

Client/Metric ID: .

Sample Date: 01/11/21 11:20

Laboratory ID: 21-000285-0007

Relinquished by: Client

Temp: 19.3 °C

Sample Results

Solvents		Method EPA5021A				Units µg/g	Batch 2100541	Analyze 01/20/21 09:17 AM			
Analyte	Result	Limits	LOQ	Status	Notes	Analyte	Result	Limits	LOQ	Status	Notes
1,4-Dioxane	< LOQ	380	100	pass		2-Butanol	< LOQ	5000	200	pass	
2-Ethoxyethanol	< LOQ	160	30.0	pass		2-Methylbutane	< LOQ		200		
2-Methylpentane	< LOQ		30.0			2-Propanol (IPA)	< LOQ	5000	200	pass	
2,2-Dimethylbutane	< LOQ		30.0			2,2-Dimethylpropane	< LOQ		200		
2,3-Dimethylbutane	< LOQ		30.0			3-Methylpentane	< LOQ		30.0		
Acetone	< LOQ	5000	200	pass		Acetonitrile	< LOQ	410	100	pass	
Benzene	< LOQ	2.00	1.00	pass		Butanes (sum)	< LOQ	5000	400	pass	
Cyclohexane	< LOQ	3880	200	pass		Ethanol ⁱ	< LOQ		200		
Ethyl acetate	< LOQ	5000	200	pass		Ethyl benzene	< LOQ		200		
Ethyl ether	< LOQ	5000	200	pass		Ethylene glycol	< LOQ	620	200	pass	
Ethylene oxide	< LOQ	50.0	30.0	pass		Hexanes (sum)	< LOQ	290	150	pass	
Isopropyl acetate	< LOQ	5000	200	pass		Isopropylbenzene	< LOQ	70.0	30.0	pass	
m,p-Xylene	< LOQ		200			Methanol	< LOQ	3000	200	pass	
Methylene chloride	< LOQ	600	200	pass		Methylpropane	< LOQ		200		
n-Butane	< LOQ		200			n-Heptane	< LOQ	5000	200	pass	
n-Hexane	< LOQ		30.0			n-Pentane	< LOQ		200		
o-Xylene	< LOQ		200			Pentanes (sum)	< LOQ	5000	600	pass	
Propane	< LOQ	5000	200	pass		Tetrahydrofuran	< LOQ	720	100	pass	
Toluene	< LOQ	890	100	pass		Total Xylenes	< LOQ		400		
Total Xylenes and Ethyl	< LOQ	2170	600	pass							



12423 NE Whitaker Way
 Portland, OR 97230
 503-254-1794



Report Number: 21-000285/D09.R00
Report Date: 01/22/2021
ORELAP#: OR100028
Purchase Order:
Received: 01/11/21 12:29

Pesticides											
Method AOAC 2007.01 & EN 15662 (mod) Units mg/kg Batch 2100643 Analyze 01/22/21 11:34 AM											
Analyte	Result	Limits	LOQ	Status	Notes	Analyte	Result	Limits	LOQ	Status	Notes
Abamectin	< LOQ	0.50	0.250	pass		Acephate	< LOQ	0.40	0.250	pass	
Acequinocyl	< LOQ	2.0	1.00	pass		Acetamiprid	< LOQ	0.20	0.100	pass	
Aldicarb	< LOQ	0.40	0.200	pass		Azoxystrobin	< LOQ	0.20	0.100	pass	
Bifenazate	< LOQ	0.20	0.100	pass		Bifenthrin	< LOQ	0.20	0.100	pass	
Boscalid	< LOQ	0.40	0.200	pass		Carbaryl	< LOQ	0.20	0.100	pass	
Carbofuran	< LOQ	0.20	0.100	pass		Chlorantraniliprole	< LOQ	0.20	0.100	pass	
Chlorfenapyr	< LOQ	1.0	0.500	pass		Chlorpyrifos	< LOQ	0.20	0.100	pass	
Clofentezine	< LOQ	0.20	0.100	pass		Cyfluthrin	< LOQ	1.0	0.500	pass	
Cypermethrin	< LOQ	1.0	0.500	pass		Daminozide	< LOQ	1.0	0.500	pass	
Diazinon	< LOQ	0.20	0.100	pass		Dichlorvos	< LOQ	1.0	0.500	pass	
Dimethoate	< LOQ	0.20	0.100	pass		Ethoprophos	< LOQ	0.20	0.100	pass	
Etofenprox	< LOQ	0.40	0.200	pass		Etoxazole	< LOQ	0.20	0.100	pass	
Fenoxycarb	< LOQ	0.20	0.100	pass		Fenpyroximate	< LOQ	0.40	0.200	pass	
Fipronil	< LOQ	0.40	0.200	pass		Fonicamid	< LOQ	1.0	0.400	pass	
Fludioxonil	< LOQ	0.40	0.200	pass		Hexythiazox	< LOQ	1.0	0.400	pass	
Imazalil	< LOQ	0.20	0.100	pass		Imidacloprid	< LOQ	0.40	0.200	pass	
Kresoxim-methyl	< LOQ	0.40	0.200	pass		Malathion	< LOQ	0.20	0.100	pass	
Metalaxyl	< LOQ	0.20	0.100	pass		Methiocarb	< LOQ	0.20	0.100	pass	
Methomyl	< LOQ	0.40	0.200	pass		MGK-264	< LOQ	0.20	0.100	pass	
Myclobutanil	< LOQ	0.20	0.100	pass		Naled	< LOQ	0.50	0.250	pass	
Oxamyl	< LOQ	1.0	0.500	pass		Paclobutrazole	< LOQ	0.40	0.200	pass	
Parathion-Methyl	< LOQ	0.20	0.200	pass		Permethrin	< LOQ	0.20	0.100	pass	
Phosmet	< LOQ	0.20	0.100	pass		Piperonyl butoxide	< LOQ	2.0	1.00	pass	
Prallethrin	< LOQ	0.20	0.200	pass		Propiconazole	< LOQ	0.40	0.200	pass	
Propoxur	< LOQ	0.20	0.100	pass		Pyrethrin I (total)	< LOQ	1.0	0.500	pass	
Pyridaben	< LOQ	0.20	0.100	pass		Spinosad	< LOQ	0.20	0.100	pass	
Spiromesifen	< LOQ	0.20	0.100	pass		Spirotetramat	< LOQ	0.20	0.100	pass	
Spiroxamine	< LOQ	0.40	0.200	pass		Tebuconazole	< LOQ	0.40	0.200	pass	
Thiacloprid	< LOQ	0.20	0.100	pass		Thiamethoxam	< LOQ	0.20	0.100	pass	
Trifloxystrobin	< LOQ	0.20	0.100	pass							

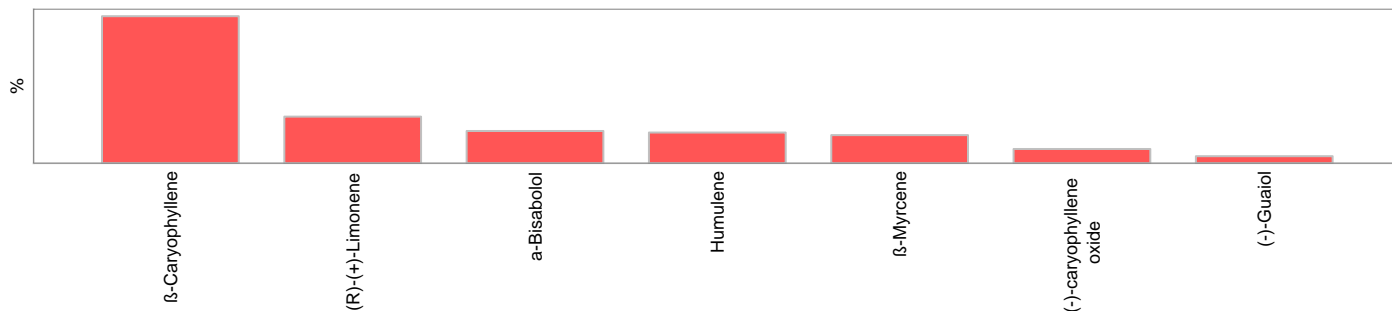


12423 NE Whitaker Way
Portland, OR 97230
503-254-1794

Report Number: 21-000285/D09.R00
Report Date: 01/22/2021
ORELAP#: OR100028
Purchase Order:
Received: 01/11/21 12:29



Terpenes				Method J AOAC 2015 V98-6	Units %	Batch 2100554	Analyze 01/20/21 09:36 AM		
Analyte	Result	LOQ	% of Total	Notes	Analyte	Result	LOQ	% of Total	Notes
β-Caryophyllene†	0.484	0.020	47.45%		(R)-(+)-Limonene†	0.155	0.020	15.20%	
α-Bisabolol†	0.108	0.020	10.59%		Humulene†	0.103	0.020	10.10%	
β-Myrcene†	0.0943	0.020	9.25%		(-)-caryophyllene oxide†	0.0488	0.020	4.78%	
(-)-Guaiol†	0.0251	0.020	2.46%		(-)-α-Terpineol†	< LOQ	0.020	0.00%	
(-)-Isopulegol†	< LOQ	0.020	0.00%		(-)-β-Pinene†	< LOQ	0.020	0.00%	
(+)-Borneol†	< LOQ	0.020	0.00%		(+)-Cedrol†	< LOQ	0.020	0.00%	
(+)-fenchol†	< LOQ	0.020	0.00%		(+)-Pulegone†	< LOQ	0.020	0.00%	
(±)-Camphor†	< LOQ	0.020	0.00%		(±)-cis-Nerolidol†	< LOQ	0.020	0.00%	
(±)-fenchone†	< LOQ	0.020	0.00%		(±)-trans-Nerolidol†	< LOQ	0.020	0.00%	
α-cedrene†	< LOQ	0.020	0.00%		α-phellandrene†	< LOQ	0.020	0.00%	
α-pinene†	< LOQ	0.020	0.00%		α-Terpinene†	< LOQ	0.020	0.00%	
Camphene†	< LOQ	0.020	0.00%		cis-β-Ocimene†	< LOQ	0.006	0.00%	
d-3-Carene†	< LOQ	0.020	0.00%		Eucalyptol†	< LOQ	0.020	0.00%	
farnesene†	< LOQ	0.020	0.00%		γ-Terpinene†	< LOQ	0.020	0.00%	
Geraniol†	< LOQ	0.020	0.00%		Geranyl acetate†	< LOQ	0.020	0.00%	
Isoborneol†	< LOQ	0.020	0.00%		Linalool†	< LOQ	0.020	0.00%	
Menthol†	< LOQ	0.020	0.00%		nerol†	< LOQ	0.020	0.00%	
p-Cymene†	< LOQ	0.020	0.00%		Sabinene†	< LOQ	0.020	0.00%	
Sabinene hydrate†	< LOQ	0.020	0.00%		Terpinolene†	< LOQ	0.020	0.00%	
trans-β-Ocimene†	< LOQ	0.013	0.00%		valencene†	< LOQ	0.020	0.00%	
Total Terpenes	1.02								



Metals									
Analyte	Result	Limits	Units	LOQ	Batch	Analyze	Method	Notes	
Arsenic	< LOQ		mg/kg	0.0416	2100499	01/18/21	AOAC 2013.06 (mod.)	X	
Cadmium	< LOQ		mg/kg	0.0416	2100499	01/18/21	AOAC 2013.06 (mod.)	X	
Lead	< LOQ		mg/kg	0.0416	2100499	01/18/21	AOAC 2013.06 (mod.)	X	
Mercury	< LOQ		mg/kg	0.0208	2100499	01/18/21	AOAC 2013.06 (mod.)	X	

Nutrition									
Analyte	Result	Limits	Units	LOQ	Batch	Analyze	Method	Notes	
Water Activity	0.328	0.650	Aw	0.030	2100578	01/20/21	AOAC 978.18	X	



12423 NE Whitaker Way
Portland, OR 97230
503-254-1794



Report Number: 21-000285/D10.R00
Report Date: 01/22/2021
ORELAP#: OR100028
Purchase Order:
Received: 01/11/21 12:29

Customer: Etz Hayim Holdings
Product identity: FORM-DA10-DRYCP50
Client/Metric ID: .
Laboratory ID: 21-000285-0006

Sample Date: 01/11/21 11:20

Summary

Microbiology:

Less than LOQ for all analytes.



12423 NE Whitaker Way
Portland, OR 97230
503-254-1794



Report Number: 21-000285/D10.R00
Report Date: 01/22/2021
ORELAP#: OR100028
Purchase Order:
Received: 01/11/21 12:29

Customer: Etz Hayim Holdings
16427 NE Airport Way
PORTLAND 97230
United States
Product identity: FORM-DA10-DRYCP50
Client/Metric ID: .
Sample Date: 01/11/21 11:20
Laboratory ID: 21-000285-0006
Relinquished by: Client
Temp: 19.3 °C

Sample Results

Microbiology								
Analyte	Result	Limits	Units	LOQ	Batch	Analyze	Method	Notes
E.coli	< LOQ		cfu/g	10	2100470	01/20/21	AOAC 991.14 (Petrifilm)	X
Total Coliforms	< LOQ		cfu/g	10	2100470	01/20/21	AOAC 991.14 (Petrifilm)	X
Mold (RAPID Petrifilm)	< LOQ		cfu/g	10	2100469	01/20/21	AOAC 2014.05 (RAPID)	X
Yeast (RAPID Petrifilm)	< LOQ		cfu/g	10	2100469	01/20/21	AOAC 2014.05 (RAPID)	X



12423 NE Whitaker Way
 Portland, OR 97230
 503-254-1794



Report Number: 21-000285/D05.R00
Report Date: 01/15/2021
ORELAP#: OR100028
Purchase Order:
Received: 01/11/21 12:29

Customer: Etz Hayim Holdings
Product identity: FORM-DA10-DRYCP50 bottom
Client/Metric ID: .
Laboratory ID: 21-000285-0005

Sample Date: 01/11/21 11:20

Summary

Potency:

Analyte per 1g	Result	Limits	Units	Status	
CBC per 1g [†]	2.90		mg/1g		CBD-Total per 1g 145 mg/1g
CBD per 1g	145		mg/1g		
CBDV per 1g [†]	0.501		mg/1g		THC-Total per 1g 2.57 mg/1g
CBG per 1g [†]	3.52		mg/1g		
CBL per 1g [†]	0.103		mg/1g		(Reported in milligrams per serving)
Δ9-THC per 1g	2.57		mg/1g		



12423 NE Whitaker Way
 Portland, OR 97230
 503-254-1794

Report Number: 21-000285/D05.R00
Report Date: 01/15/2021
ORELAP#: OR100028
Purchase Order:
Received: 01/11/21 12:29



Customer: Etz Hayim Holdings
 16427 NE Airport Way
 PORTLAND 97230
 United States

Product identity: FORM-DA10-DRYCP50 bottom

Client/Metric ID: .

Sample Date: 01/11/21 11:20

Laboratory ID: 21-000285-0005

Relinquished by: Client

Temp: 19.3 °C

Serving Size #1: 1 g

Sample Results

Potency per 1g		Method J AOAC 2015 V98-6 (mod)	Batch: 2100339	Analyze: 1/12/21 7:52:00 PM	
Analyte	Result	Limits	Units	LOQ	Notes
CBC per 1g [†]	2.90		mg/1g	0.0328	
CBC-A per 1g [†]	< LOQ		mg/1g	0.0328	
CBC-Total per 1g [†]	2.90		mg/1g	0.0616	
CBD per 1g	145		mg/1g	3.28	
CBD-A per 1g	< LOQ		mg/1g	0.0328	
CBD-Total per 1g	145		mg/1g	3.31	
CBDV per 1g [†]	0.501		mg/1g	0.0328	
CBDV-A per 1g [†]	< LOQ		mg/1g	0.0328	
CBDV-Total per 1g [†]	0.501		mg/1g	0.0613	
CBG per 1g [†]	3.52		mg/1g	0.0328	
CBG-A per 1g [†]	< LOQ		mg/1g	0.0328	
CBG-Total per 1g [†]	3.52		mg/1g	0.0613	
CBL per 1g [†]	0.103		mg/1g	0.0328	
CBN per 1g	< LOQ		mg/1g	0.0328	
Δ8-THC per 1g [†]	< LOQ		mg/1g	0.0328	
Δ9-THC per 1g	2.57		mg/1g	0.0328	
THC-A per 1g	< LOQ		mg/1g	0.0328	
THC-Total per 1g	2.57		mg/1g	0.0616	
THCV per 1g [†]	< LOQ		mg/1g	0.0328	
THCV-A per 1g [†]	< LOQ		mg/1g	0.0328	
THCV-Total per 1g [†]	< LOQ		mg/1g	0.0616	
Total Cannabinoids 1g[†]	155		mg/1g		