



DRYCP50 BJ29		NR: Not Reported NA: Not Available LOQ: Limit Of Quantitation LOD: Limit Of Detection $1\text{ g} = 10^3\text{ kg} = 10^3\text{ mg} = 10^6\text{ }\mu\text{g}$ $1\text{ mg/kg} = 1\text{ ppm} = 1000\text{ ppb}$
50MG CBD CAPSULES	Serving Size: 1 Capsule	
Pixis Labs	Oregon Accreditation: OR100028	

POTENCY	PER SERVING	PER GRAM	REGULATORY ACTION LEVEL
Cannabidiol (CBD)	52.16 mg/serving	171 mg/g	N/A
Total THC (d9-THC + d8-THC)	0.66 mg/serving	2.16 mg/g	3 mg/g
Cannabigerol (CBG)	0.45 mg/serving	1.47 mg/g	N/A
Cannabinol (CBN)	0.07 mg/serving	0.23 mg/g	N/A
Cannabichromene (CBC)	0.02 mg/serving	0.06 mg/g	N/A

HEAVY METALS	PER SERVING	PER GRAM	REGULATORY ACTION LEVEL
Arsenic	<LOQ $\mu\text{g/serving}$	<LOQ $\mu\text{g/g}$	10 $\mu\text{g/day}$ ^[1]
Cadmium	<LOQ $\mu\text{g/serving}$	<LOQ $\mu\text{g/g}$	4.1 $\mu\text{g/day}$ ^[1]
Lead	<LOQ $\mu\text{g/serving}$	<LOQ $\mu\text{g/g}$	3.5 $\mu\text{g/day}$ ^[2]
Mercury	<LOQ $\mu\text{g/serving}$	<LOQ $\mu\text{g/g}$	2 $\mu\text{g/day}$ ^[1]

PESTICIDES	REGULATORY ACTION LEVEL
None of the 59 pesticides tested found above limit of detection in the sample.	10 ppb ^[1]

RESIDUAL SOLVENTS
None of the 36 residual solvents tested found above limit of detection in the sample.

TERPENES	% OF SAMPLE
Limonene	0.167 %
β -Caryophyllene	0.157 %
β -Myrcene	0.152 %

1. American Herbal Pharmacopoeia. (2014). *Cannabis Inflorescence: Standards of Identity, Analysis, and Quality Control*. Washington DC: AHP.
2. US Food and Drug Administration. (2019). *Lead in Food, Foodwares, and Dietary Supplements*. Washington DC: FDA. US Food and Drug Administration. (2019). *Lead in Food, Foodwares, and Dietary Supplements*. Washington DC: FDA.



Product identity: BJ29 DRYCP50 Bottom
Laboratory ID: 19-012935-0003

Client/Metric ID: .
Sample Date: 10/22/19 14:00

Summary

Potency:

Analyte per 1g	Result	Limits	Units	Status	
CBC per 1g [†]	0.0550		mg/1g		CBD-Total per 1g 171 mg/1g
CBD per 1g	171		mg/1g		
CBDV per 1g [†]	0.993		mg/1g		THC-Total per 1g 2.16 mg/1g
CBG per 1g [†]	1.47		mg/1g		(Reported in milligrams per serving)
CBL per 1g [†]	0.442		mg/1g		
CBN per 1g	0.228		mg/1g		
Δ9-THC per 1g	2.16		mg/1g		



Customer: Etz Hayim Holdings

Product identity: BJ29 DRYCP50 Bottom

Client/Metric ID: .

Sample Date: 10/22/19 14:00

Laboratory ID: 19-012935-0003

Relinquished by: ETZHH INC

Temp: 23.5 °C

Serving Size #1: 1 g

Sample Results

Potency per 1g		Batch: 1909821					
Analyte	Result	Limits	Units	LOQ	Analyze	Method	Notes
CBC per 1g [†]	0.0550		mg/1g	0.0333	10/29/19	J AOAC 2015 V98-6	
CBC-A per 1g [†]	< LOQ		mg/1g	0.0333	10/29/19	J AOAC 2015 V98-6	
CBC-Total per 1g [†]	< LOQ		mg/1g	0.0626	10/29/19	J AOAC 2015 V98-6	
CBD per 1g	171		mg/1g	0.0333	10/29/19	J AOAC 2015 V98-6	
CBD-A per 1g	< LOQ		mg/1g	0.0333	10/29/19	J AOAC 2015 V98-6	
CBD-Total per 1g	171		mg/1g	0.0626	10/29/19	J AOAC 2015 V98-6	
CBDV per 1g [†]	0.993		mg/1g	0.0333	10/29/19	J AOAC 2015 V98-6	
CBDV-A per 1g [†]	< LOQ		mg/1g	0.0333	10/29/19	J AOAC 2015 V98-6	
CBDV-Total per 1g [†]	0.993		mg/1g	0.0622	10/29/19	J AOAC 2015 V98-6	
CBG per 1g [†]	1.47		mg/1g	0.0333	10/29/19	J AOAC 2015 V98-6	
CBG-A per 1g [†]	< LOQ		mg/1g	0.0333	10/29/19	J AOAC 2015 V98-6	
CBG-Total per 1g [†]	1.47		mg/1g	0.0626	10/29/19	J AOAC 2015 V98-6	
CBL per 1g [†]	0.442		mg/1g	0.0333	10/29/19	J AOAC 2015 V98-6	
CBN per 1g	0.228		mg/1g	0.0333	10/29/19	J AOAC 2015 V98-6	
Δ8-THC per 1g [†]	< LOQ		mg/1g	0.0333	10/29/19	J AOAC 2015 V98-6	
Δ9-THC per 1g	2.16		mg/1g	0.0333	10/29/19	J AOAC 2015 V98-6	
THC-A per 1g	< LOQ		mg/1g	0.0333	10/29/19	J AOAC 2015 V98-6	
THC-Total per 1g	2.16		mg/1g	0.0626	10/29/19	J AOAC 2015 V98-6	
THCV per 1g [†]	< LOQ		mg/1g	0.0333	10/29/19	J AOAC 2015 V98-6	
THCV-A per 1g [†]	< LOQ		mg/1g	0.0333	10/29/19	J AOAC 2015 V98-6	
THCV-Total per 1g [†]	< LOQ		mg/1g	0.0622	10/29/19	J AOAC 2015 V98-6	



12423 NE Whitaker Way
Portland, OR 97230
503-254-1794



Report Number: 19-012935/D06.R00
Report Date: 11/05/2019
ORELAP#: OR100028
Purchase Order:
Received: 10/22/19 16:35

Customer: Etz Hayim Holdings
Product identity: BJ29 DRYCP50
Client/Metric ID: .
Laboratory ID: 19-012935-0007

Sample Date: 10/22/19 14:00

Summary

Metals:

Less than LOQ for all analytes.



Customer: Etz Hayim Holdings

Product identity: BJ29 DRYCP50

Client/Metric ID: .

Sample Date: 10/22/19 14:00

Laboratory ID: 19-012935-0007

Relinquished by: ETZHH INC

Temp: 23.5 °C

Sample Results

Metals								
Analyte	Result	Limits	Units	LOQ	Batch	Analyze	Method	Notes
Arsenic	< LOQ		mg/kg	0.0476	1909991	11/01/19	AOAC 2013.06 (mod.)	X
Cadmium	< LOQ		mg/kg	0.0476	1909991	11/01/19	AOAC 2013.06 (mod.)	X
Lead	< LOQ		mg/kg	0.0476	1909991	11/01/19	AOAC 2013.06 (mod.)	X
Mercury	< LOQ		mg/kg	0.0238	1909991	11/01/19	AOAC 2013.06 (mod.)	X



12423 NE Whitaker Way
Portland, OR 97230
503-254-1794



Report Number: 19-012935/D07.R00
Report Date: 11/05/2019
ORELAP#: OR100028
Purchase Order:
Received: 10/22/19 16:35

Customer: Etz Hayim Holdings
Product identity: BJ29 DRYCP50
Client/Metric ID: .
Laboratory ID: 19-012935-0004

Sample Date: 10/22/19 14:00

Summary

Pesticides:

All analytes passing and less than LOQ.



Customer: Etz Hayim Holdings

Product identity: BJ29 DRYCP50
Client/Metric ID: .
Sample Date: 10/22/19 14:00
Laboratory ID: 19-012935-0004
Relinquished by: ETZHH INC
Temp: 23.5 °C

Sample Results

Pesticides											
Method AOAC 2007.01 & EN 15662 (mod) Units mg/kg Batch 1909937 Analyze 11/01/19 09:20 AM											
Analyte	Result	Limits	LOQ	Status	Notes	Analyte	Result	Limits	LOQ	Status	Notes
Abamectin	< LOQ	0.50	0.250	pass		Acephate	< LOQ	0.40	0.250	pass	
Acequinocyl	< LOQ	2.0	1.00	pass		Acetamiprid	< LOQ	0.20	0.100	pass	
Aldicarb	< LOQ	0.40	0.200	pass		Azoxystrobin	< LOQ	0.20	0.100	pass	
Bifenazate	< LOQ	0.20	0.100	pass		Bifenthrin	< LOQ	0.20	0.100	pass	
Boscalid	< LOQ	0.40	0.200	pass		Carbaryl	< LOQ	0.20	0.100	pass	
Carbofuran	< LOQ	0.20	0.100	pass		Chlorantraniliprole	< LOQ	0.20	0.100	pass	
Chlorfenapyr	< LOQ	1.0	0.500	pass		Chlorpyrifos	< LOQ	0.20	0.100	pass	
Clofentezine	< LOQ	0.20	0.100	pass		Cyfluthrin	< LOQ	1.0	0.500	pass	
Cypermethrin	< LOQ	1.0	0.500	pass		Daminozide	< LOQ	1.0	0.500	pass	
Diazinon	< LOQ	0.20	0.100	pass		Dichlorvos	< LOQ	1.0	0.500	pass	
Dimethoate	< LOQ	0.20	0.100	pass		Ethoprophos	< LOQ	0.20	0.100	pass	
Etofenprox	< LOQ	0.40	0.200	pass		Etoxazole	< LOQ	0.20	0.100	pass	
Fenoxycarb	< LOQ	0.20	0.100	pass		Fenpyroximate	< LOQ	0.40	0.200	pass	
Fipronil	< LOQ	0.40	0.200	pass		Fonicamid	< LOQ	1.0	0.400	pass	
Fludioxonil	< LOQ	0.40	0.200	pass		Hexythiazox	< LOQ	1.0	0.400	pass	
Imazalil	< LOQ	0.20	0.100	pass		Imidacloprid	< LOQ	0.40	0.200	pass	
Kresoxim-methyl	< LOQ	0.40	0.200	pass		Malathion	< LOQ	0.20	0.100	pass	
Metalaxyl	< LOQ	0.20	0.100	pass		Methiocarb	< LOQ	0.20	0.100	pass	
Methomyl	< LOQ	0.40	0.200	pass		MGK-264	< LOQ	0.20	0.100	pass	
Myclobutanil	< LOQ	0.20	0.100	pass		Naled	< LOQ	0.50	0.250	pass	
Oxamyl	< LOQ	1.0	0.500	pass		Paclobutrazole	< LOQ	0.40	0.200	pass	
Parathion-Methyl	< LOQ	0.20	0.200	pass		Permethrin	< LOQ	0.20	0.100	pass	
Phosmet	< LOQ	0.20	0.100	pass		Piperonyl butoxide	< LOQ	2.0	1.00	pass	
Prallethrin	< LOQ	0.20	0.200	pass		Propiconazole	< LOQ	0.40	0.200	pass	
Propoxur	< LOQ	0.20	0.100	pass		Pyrethrin I (total)	< LOQ	1.0	0.500	pass	
Pyridaben	< LOQ	0.20	0.100	pass		Spinosad	< LOQ	0.20	0.100	pass	
Spiromesifen	< LOQ	0.20	0.100	pass		Spirotetramat	< LOQ	0.20	0.100	pass	
Spiroxamine	< LOQ	0.40	0.200	pass		Tebuconazole	< LOQ	0.40	0.200	pass	
Thiacloprid	< LOQ	0.20	0.100	pass		Thiamethoxam	< LOQ	0.20	0.100	pass	
Trifloxystrobin	< LOQ	0.20	0.100	pass							



Customer: Etz Hayim Holdings
Product identity: BJ29 DRYCP50
Client/Metric ID: .
Laboratory ID: 19-012935-0006

Sample Date: 10/22/19 14:00

Summary

Residual Solvents:

All analytes passing and less than LOQ.



Customer: Etz Hayim Holdings

Product identity: BJ29 DRYCP50

Client/Metric ID: .

Sample Date: 10/22/19 14:00

Laboratory ID: 19-012935-0006

Relinquished by: ETZHH INC

Temp: 23.5 °C

Sample Results

Solvents					Method EPA5021A	Units µg/g	Batch 1909884	Analyze 10/31/19 09:50 AM			
Analyte	Result	Limits	LOQ	Status	Notes	Analyte	Result	Limits	LOQ	Status	Notes
1,4-Dioxane	< LOQ	380	100	pass		2-Butanol	< LOQ	5000	200	pass	
2-Ethoxyethanol	< LOQ	160	30.0	pass		2-Methylbutane	< LOQ		200		
2-Methylpentane	< LOQ		30.0			2-Propanol (IPA)	< LOQ	5000	200	pass	
2,2-Dimethylbutane	< LOQ		30.0			2,2-Dimethylpropane	< LOQ		200		
2,3-Dimethylbutane	< LOQ		30.0			3-Methylpentane	< LOQ		30.0		
Acetone	< LOQ	5000	200	pass		Acetonitrile	< LOQ	410	100	pass	
Benzene	< LOQ	2.00	1.00	pass		Butanes (sum)	< LOQ	5000	400	pass	
Cyclohexane	< LOQ	3880	200	pass		Ethyl acetate	< LOQ	5000	200	pass	
Ethyl benzene	< LOQ		200			Ethyl ether	< LOQ	5000	200	pass	
Ethylene glycol	< LOQ	620	200	pass		Ethylene oxide	< LOQ	50.0	30.0	pass	
Hexanes (sum)	< LOQ	290	150	pass		Isopropyl acetate	< LOQ	5000	200	pass	
Isopropylbenzene	< LOQ	70.0	30.0	pass		m,p-Xylene	< LOQ		200		
Methanol	< LOQ	3000	200	pass		Methylene chloride	< LOQ	600	200	pass	
Methylpropane	< LOQ		200			n-Butane	< LOQ		200		
n-Heptane	< LOQ	5000	200	pass		n-Hexane	< LOQ		30.0		
n-Pentane	< LOQ		200			o-Xylene	< LOQ		200		
Pentanes (sum)	< LOQ	5000	600	pass		Propane	< LOQ	5000	200	pass	
Tetrahydrofuran	< LOQ	720	100	pass		Toluene	< LOQ	890	100	pass	
Total Xylenes	< LOQ		400			Total Xylenes and Ethyl	< LOQ	2170	600	pass	



Customer: Etz Hayim Holdings
Product identity: BJ29 DRYCP50
Client/Metric ID: .
Laboratory ID: 19-012935-0008

Sample Date: 10/22/19 14:00

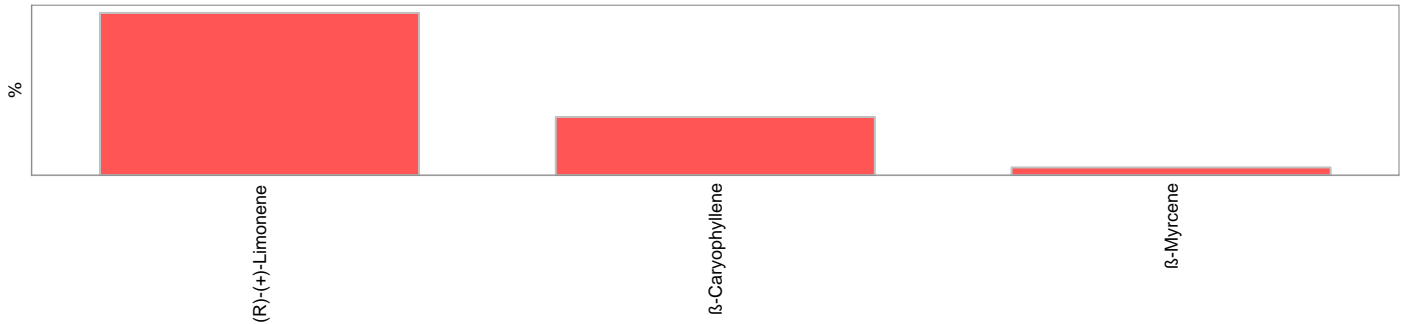
Summary

Terpenes:

Analyte	Percent by weight	Percent of Total	Analyte	Percent by weight	Percent of Total
(R)-(+)-Limonene [†]	0.167	35.08%	β-Caryophyllene [†]	0.157	32.98%
β-Myrcene [†]	0.152	31.93%	Total Terpenes[†]	0.476	100.00%



Terpenes				Method J AOAC 2015 V98-6	Units %	Batch 1909848	Analyze 10/30/19 10:00 AM		
Analyte	Result	LOQ	% of Total	Notes	Analyte	Result	LOQ	% of Total	Notes
(R)-(+)-Limonene [†]	0.167	0.020	35.08%		β-Caryophyllene [†]	0.157	0.020	32.98%	
β-Myrcene [†]	0.152	0.020	31.93%		Humulene [†]	< LOQ	0.020	0.00%	
(-)-α-Terpineol [†]	< LOQ	0.020	0.00%		(-)-caryophyllene oxide [†]	< LOQ	0.020	0.00%	
(-)-Guaiol [†]	< LOQ	0.020	0.00%		(-)-Isopulegol [†]	< LOQ	0.020	0.00%	
(-)-β-Pinene [†]	< LOQ	0.020	0.00%		(+)-Borneol [†]	< LOQ	0.020	0.00%	
(+)-Cedrol [†]	< LOQ	0.020	0.00%		(+)-fenchol [†]	< LOQ	0.020	0.00%	
(+)-Pulegone [†]	< LOQ	0.020	0.00%		(±)-Camphor [†]	< LOQ	0.020	0.00%	
(±)-cis-Nerolidol [†]	< LOQ	0.020	0.00%		(±)-fenchone [†]	< LOQ	0.020	0.00%	
(±)-trans-Nerolidol [†]	< LOQ	0.020	0.00%		a-Bisabolol [†]	< LOQ	0.020	0.00%	
a-cedrene [†]	< LOQ	0.020	0.00%		a-phellandrene [†]	< LOQ	0.020	0.00%	
a-pinene [†]	< LOQ	0.020	0.00%		a-Terpinene [†]	< LOQ	0.020	0.00%	
Camphene [†]	< LOQ	0.020	0.00%		cis-β-Ocimene [†]	< LOQ	0.006	0.00%	
d-3-Carene [†]	< LOQ	0.020	0.00%		Eucalyptol [†]	< LOQ	0.020	0.00%	
farnesene [†]	< LOQ	0.020	0.00%		gamma-Terpinene [†]	< LOQ	0.020	0.00%	
Geraniol [†]	< LOQ	0.020	0.00%		Geranyl acetate [†]	< LOQ	0.020	0.00%	
Isoborneol [†]	< LOQ	0.020	0.00%		Linalool [†]	< LOQ	0.020	0.00%	
Menthol [†]	< LOQ	0.020	0.00%		nerol [†]	< LOQ	0.020	0.00%	
p-Cymene [†]	< LOQ	0.020	0.00%		Sabinene [†]	< LOQ	0.020	0.00%	
Sabinene hydrate [†]	< LOQ	0.020	0.00%		Terpinolene [†]	< LOQ	0.020	0.00%	
trans-β-Ocimene [†]	< LOQ	0.013	0.00%		valencene [†]	< LOQ	0.020	0.00%	
Total Terpenes	0.476								





■	(R)-(+)-Limonene	35.08 %
■	β -Caryophyllene	32.98 %
■	β -Myrcene	31.93 %

